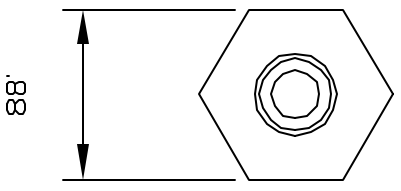
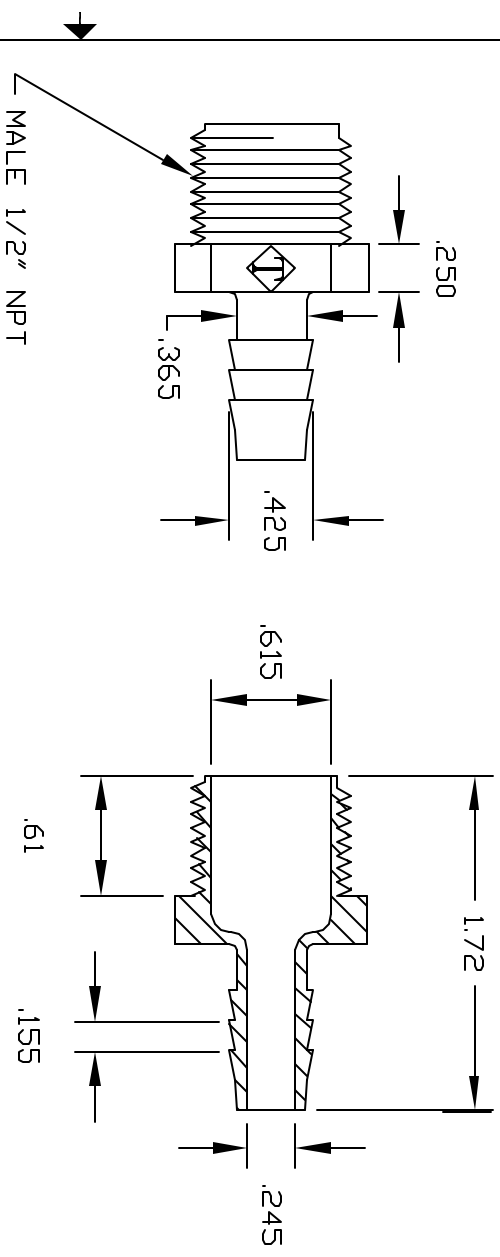


REVISIONS			
REV	DESCRIPTION	DATE	APPROVED
A	REDRAWN & RELEASED	2/97	2/97
B	MODIFY BARBS	12/02	12/02



COLOR: BLACK (PPB)

NATURAL (PPN)

CONTROLLED DOCUMENT  
ONLY IF IN RED

**CONFIDENTIAL**  
THIS PRINT AND THE SPECIFICATIONS ARE THE PROPERTY OF THOGUS PRODUCTS COMPANY AND HAVE BEEN ISSUED WITH THE UNDERSTANDING THAT IT IS TO BE USED FOR THE MANUFACTURE OF THE PARTS AND WILL BE RETURNED UPON REQUEST.

UNLESS OTHERWISE SPECIFIED DIMENSIONS ARE IN INCHES		Part Name:	1/2NPT X 3/8 BARB ADAPTER
TOLERANCES UNLESS SHOWN		Part Number:	TA1086/PP
XX +/- .05	XX +/- .05	Part Name:	1/2NPT X 3/8 BARB ADAPTER
XXX +/- .015	XX +/- .015	Part Number:	TA1086/PP
DRAWN	DATE	Part Name:	1/2NPT X 3/8 BARB ADAPTER
NM	8/97	Part Number:	TA1086/PP
FIELDWORK	DATE	Part Name:	1/2NPT X 3/8 BARB ADAPTER
1086PP	8/97	Part Number:	TA1086/PP
MATERIAL	DATE	Part Name:	1/2NPT X 3/8 BARB ADAPTER
POLYPROPYLENE	8/97	Part Number:	TA1086/PP
SCALE 1:1	SHEET 1	Part Name:	1/2NPT X 3/8 BARB ADAPTER
	OF 1	Part Number:	TA1086/PP

**THOGUS PRODUCTS**  
33490 PIN DAK PARKWAY  
AVON LAKE OHIO 44012

Small text at the bottom of the page, likely a copyright or disclaimer notice.