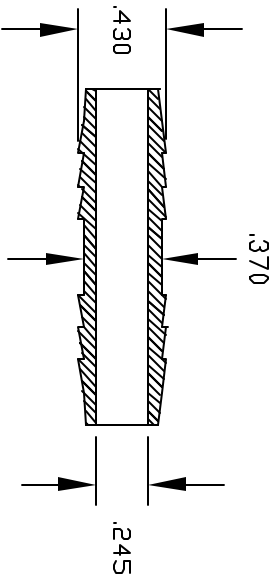
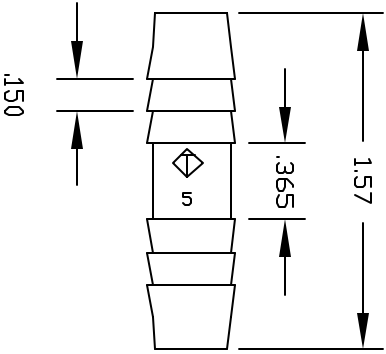


REV	DESCRIPTION	DATE	APPROVED
A	PROTOTYPE DRAWN	6/99	6/99
B	ADDED LEADING BARB CHANGE THE DIM: FROM 1.615 TO 1.61 FROM .375 TO .372 ADDED 5 DEG. & .355 FROM .437 TO .430	8/99	8/99
C	REDRAWN & RELEASED	12/23/99	BM
D	UPDATE DWG	9/07	9/07



CONTROLLED DOCUMENT
ONLY IF IN RED

CONVENTIONAL
THIS PRINT AND THE SPECIFICATIONS ARE THE PROPERTY OF THOGUS PRODUCTS COMPANY AND HAVE BEEN ISSUED WITH THE UNDERSTANDING THAT IT IS TO BE USED FOR THE MANUFACTURE FOR OTHERS AND WILL BE RETURNED UPON REQUEST.

UNLESS OTHERWISE SPECIFIED DIMENSIONS ARE IN INCHES		PART NAME:	
DECIMALS	TOLERANCES	3/8 BARB X 3/8 BARB CONNECTOR	
.XX +/- .05	ANGULAR		
.XXX +/- .015			
DRAWN	DATE	THOGUS 33490 PIN OAK PARKWAY	
BM	12/99	AVON LAKE OHIO 44012	
FILENAME:		PART NUMBER	
7066P		TC7066/P	
MATERIAL		SHEET 1 OF 1	
POLYETHYLENE		REV D	