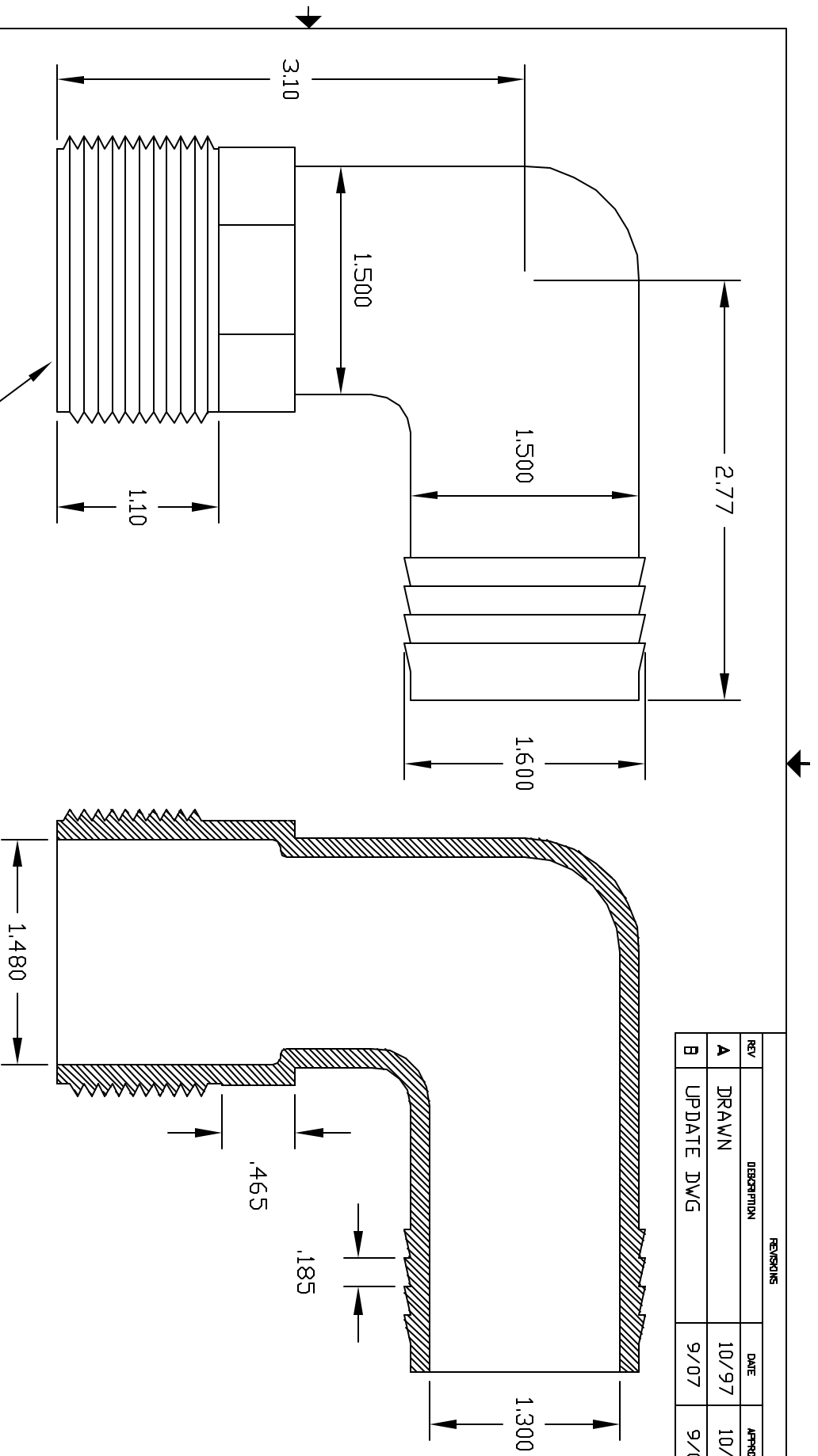


REVISIONS			
REV	DESCRIPTION	DATE	APPROVED
A	DRAWN	10/97	10/97
B	UPDATE DWG	9/07	9/07



CONTROLLED DOCUMENT  
ONLY IF IN RED

1-1/2" NPT

**CONFIDENTIAL**  
THIS PRINT AND THE SPECIFICATIONS ARE THE PROPERTY OF THOGUS PRODUCTS COMPANY AND HAVE BEEN LENT TO THE UNDERSIGNED THAT THEY WILL BE KEPT FOR THE MANUFACTURE FOR OTHERS AND WILL BE RETURNED UPON REQUEST.

UNLESS OTHERWISE SPECIFIED DIMENSIONS ARE IN INCHES	DATE
DECIMAL TOLERANCES SHALL BE:	10/97
XXX +/- .015	
XX +/- .05	
XX +/- .015	
DRAWN	
NM	
DATE	
10/97	
DESIGNED	
202424N	
MATERIAL	
NYLON	

Part Name:	1-1/2"NPT X 1-1/2 BARB ELBOW
THOGUS PRODUCTS	33490 PIN DAK PARKWAY AYDON LAKE OHIO 44012
Part Number:	TE202424/N
SHEET	1 of 1
REV	B