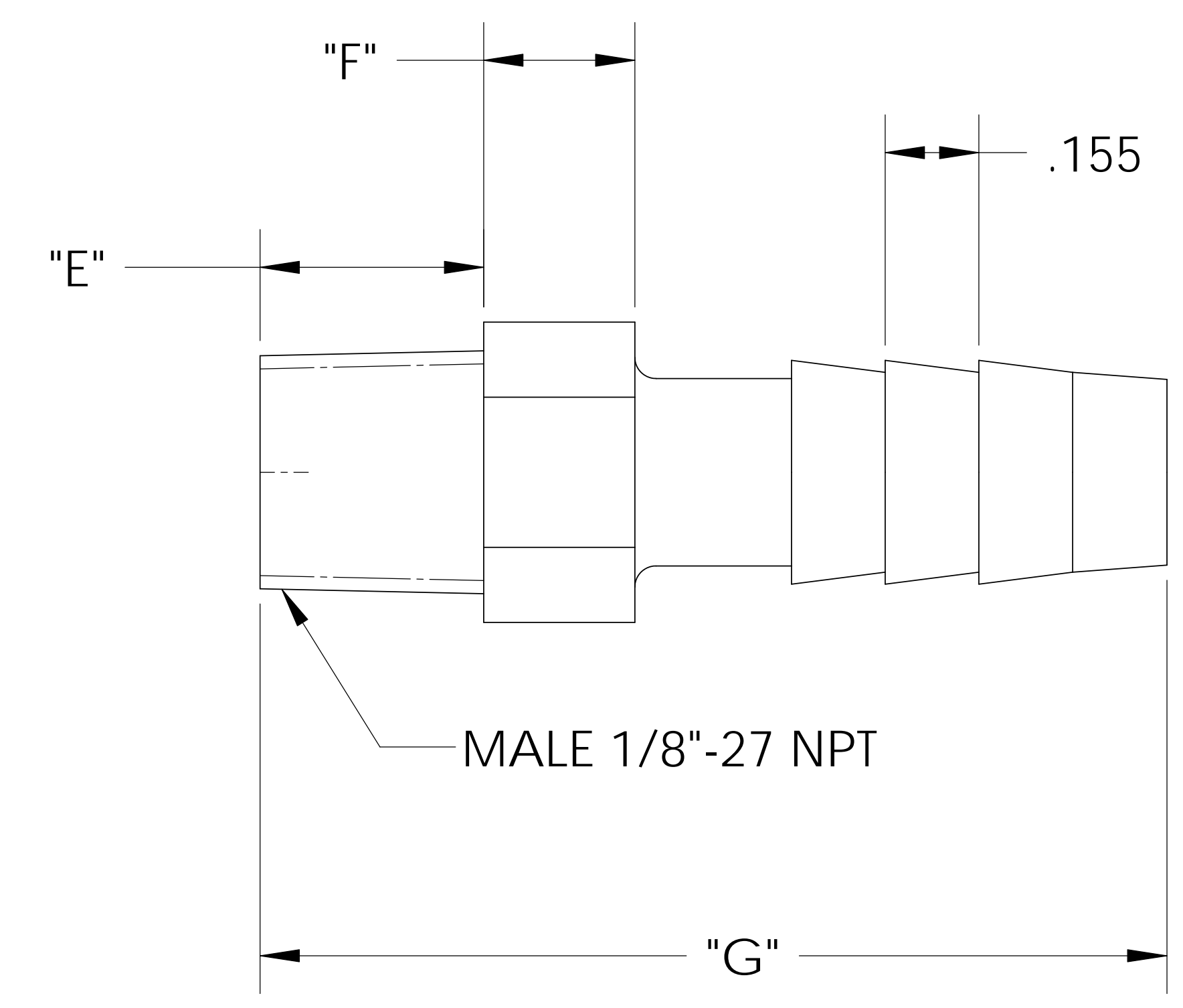
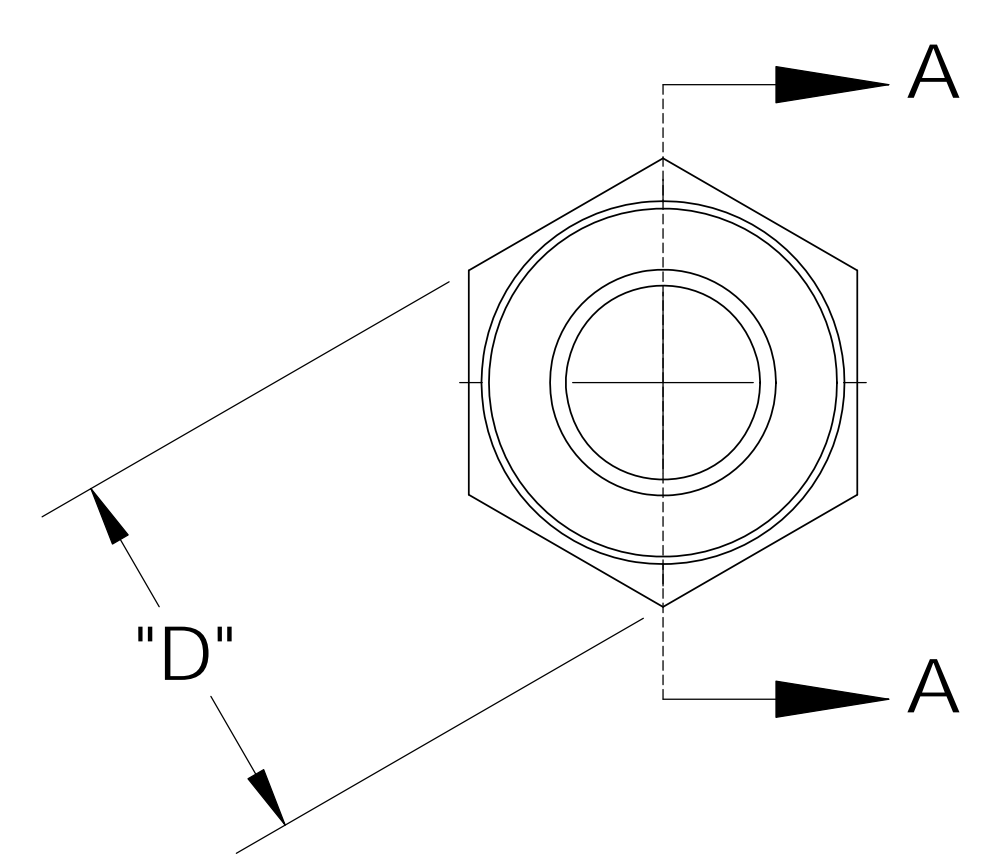
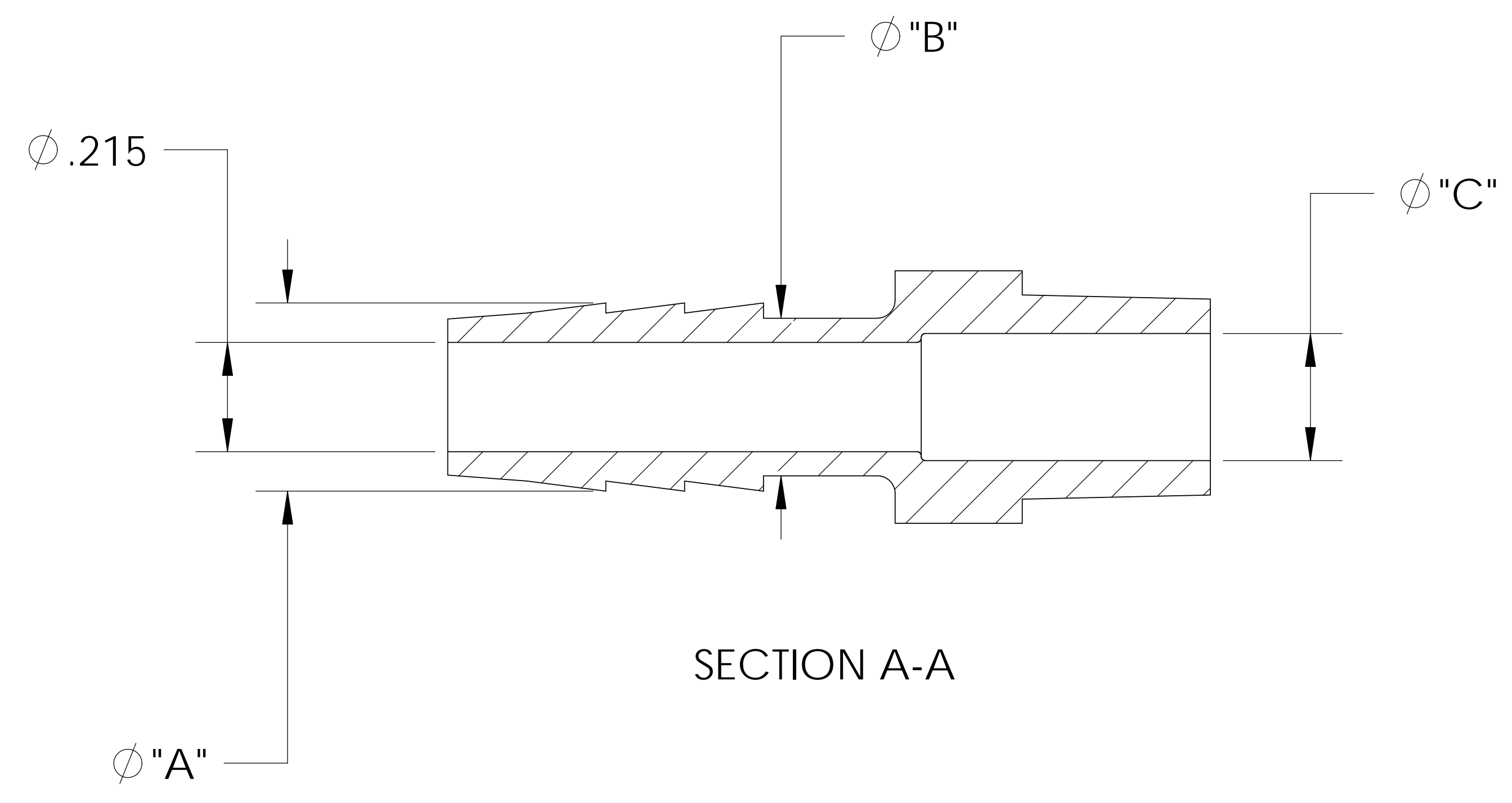
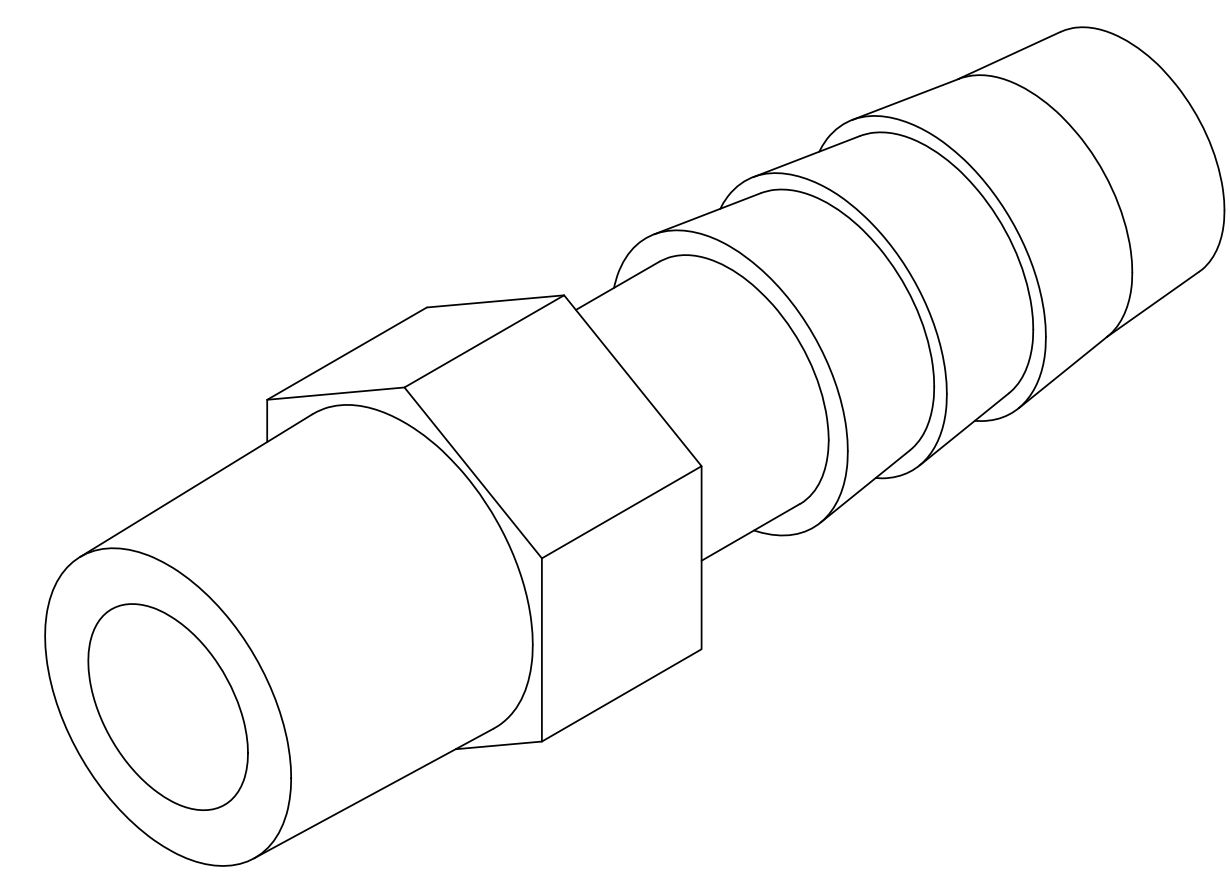


UNCONTROLLED IF PRINTED; CONTROLLED COPY LOCATED IN IQMS DOCUMENT CONTROL



CATALOG NO.	DESCRIPTION	MATERIAL	DIM "A"	DIM "B"	DIM "C"	DIM "D"	DIM "E"	DIM "F"	DIM "G"
TA1025/PP	1/8" NPT X 5/16" PP	POLYPROPYLENE	.365	.305	.245	.42	.37	.250	1.48
TA1025/P	1/8" NPT X 5/16" P	POLYETHYLENE	.370	.310	.245	.42	.36	.245	1.46
TA1025/N	1/8" NPT X 5/16" N	NYLON	.370	.310	.250	.43	.37	.250	1.50

SHOWN

NOTES:
 1) POLYPROPYLENE HAS COLOR OPTIONS:
 BLACK = TA1025/PPB
 NATURAL = TA1025/PPN

PROPRIETARY AND CONFIDENTIAL
 THE INFORMATION CONTAINED IN THIS DRAWING IS THE SOLE PROPERTY OF THOGUS PRODUCTS COMPANY. ANY REPRODUCTION IN PART OR AS A WHOLE WITHOUT THE WRITTEN PERMISSION OF THOGUS PRODUCTS COMPANY IS PROHIBITED.

REV	WRO#	DESCRIPTION
E	95.00072	CONVERTED TO 3D FORMAT
HISTORY		

UNLESS OTHERWISE SPECIFIED:		
DIMENSIONS ARE IN INCHES		
TOLERANCES:		
ANGULAR: $\pm 0.5^\circ$		
X.X = ± 0.1		
X.XX = ± 0.05		
X.XXX = ± 0.015		
REMOVE ALL SHARP EDGES AND BURRS		
BLEND ALL RADII TO 0.01IN		
INTERPRET GEOMETRIC TOLERANCING PER: ANSI Y 14.5 1994		
MATERIAL: PP, P, N		
FINISH: NA		
THIRD ANGLE PROJECTION:		
NAME	JRM	DATE
DATE	03/17/11	
CHECKED	KDJ	3/17/11
ENG APPR.		XX/XX/XX
MFG APPR.		XX/XX/XX
Q.A.		XX/XX/XX
COMMENTS:		

Thogus You think it, we can make it...
 33490 PIN OAK, AVON LAKE, OH 44012

TITLE: **1/8" NPT X 5/16" BARB ADAPTER**

SIZE	DWG. NO.	REV
B	TA1025	E

SCALE: 2:1 MASS: SHEET 1 OF 1

DO NOT SCALE DRAWING