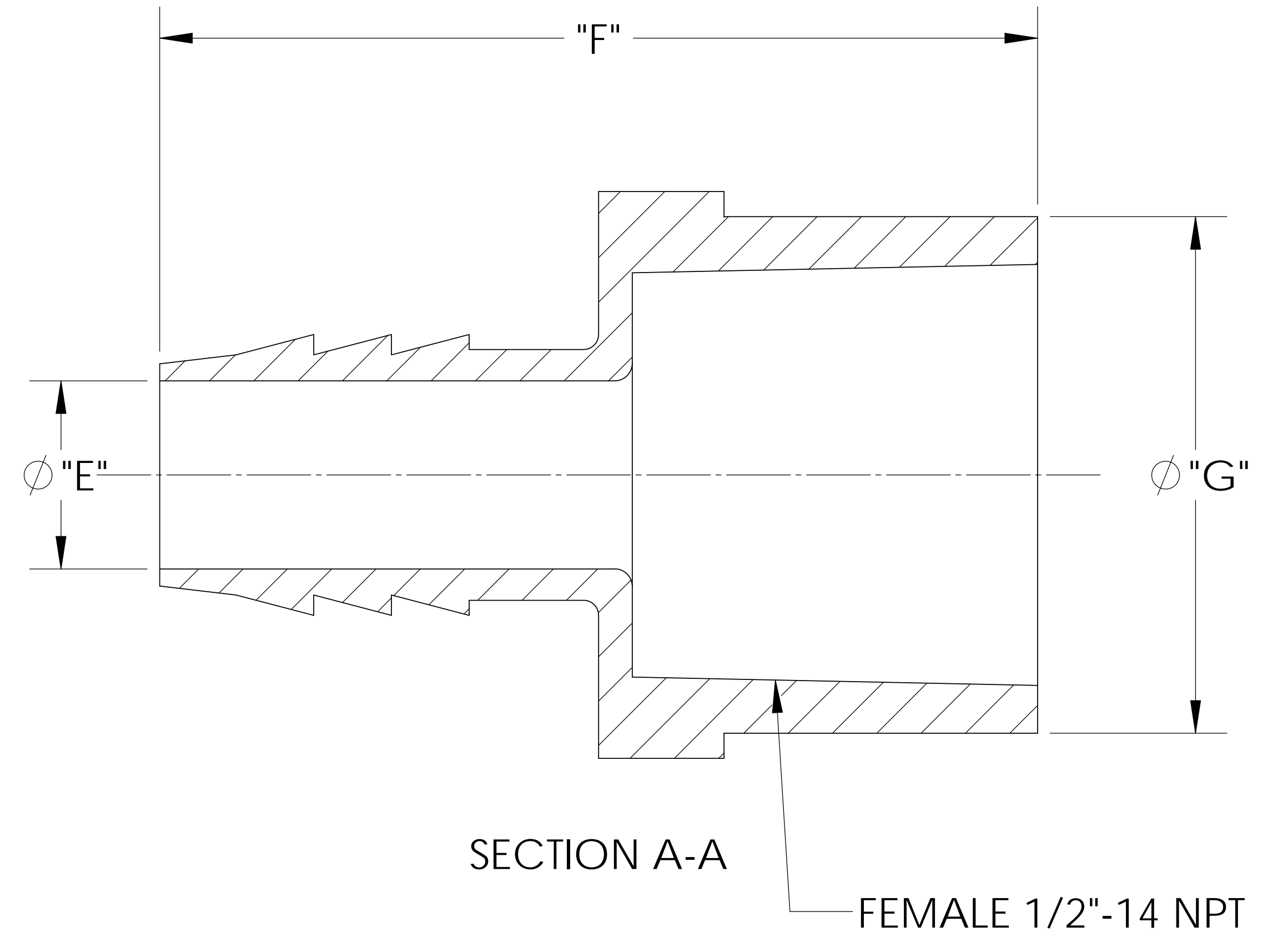
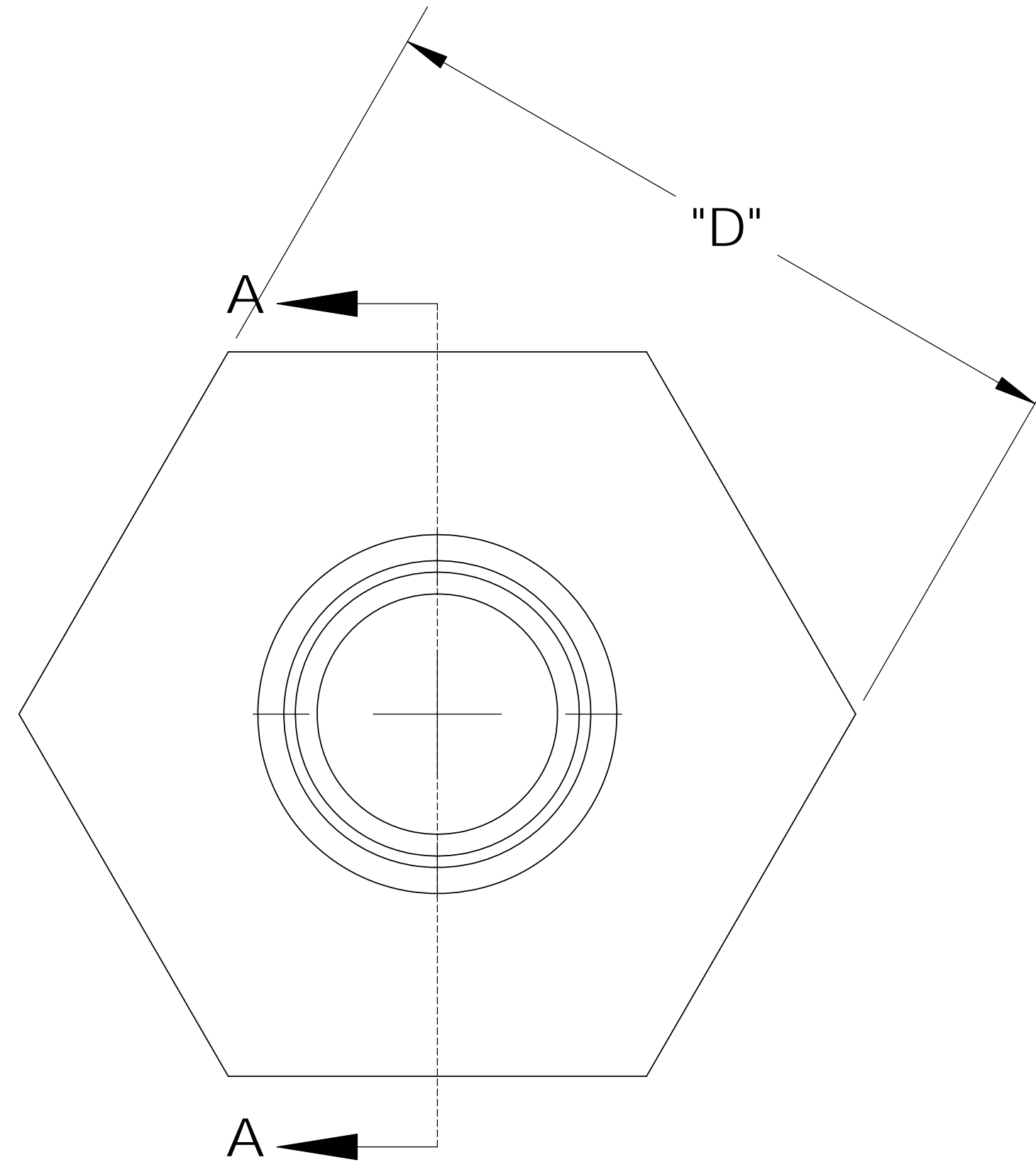
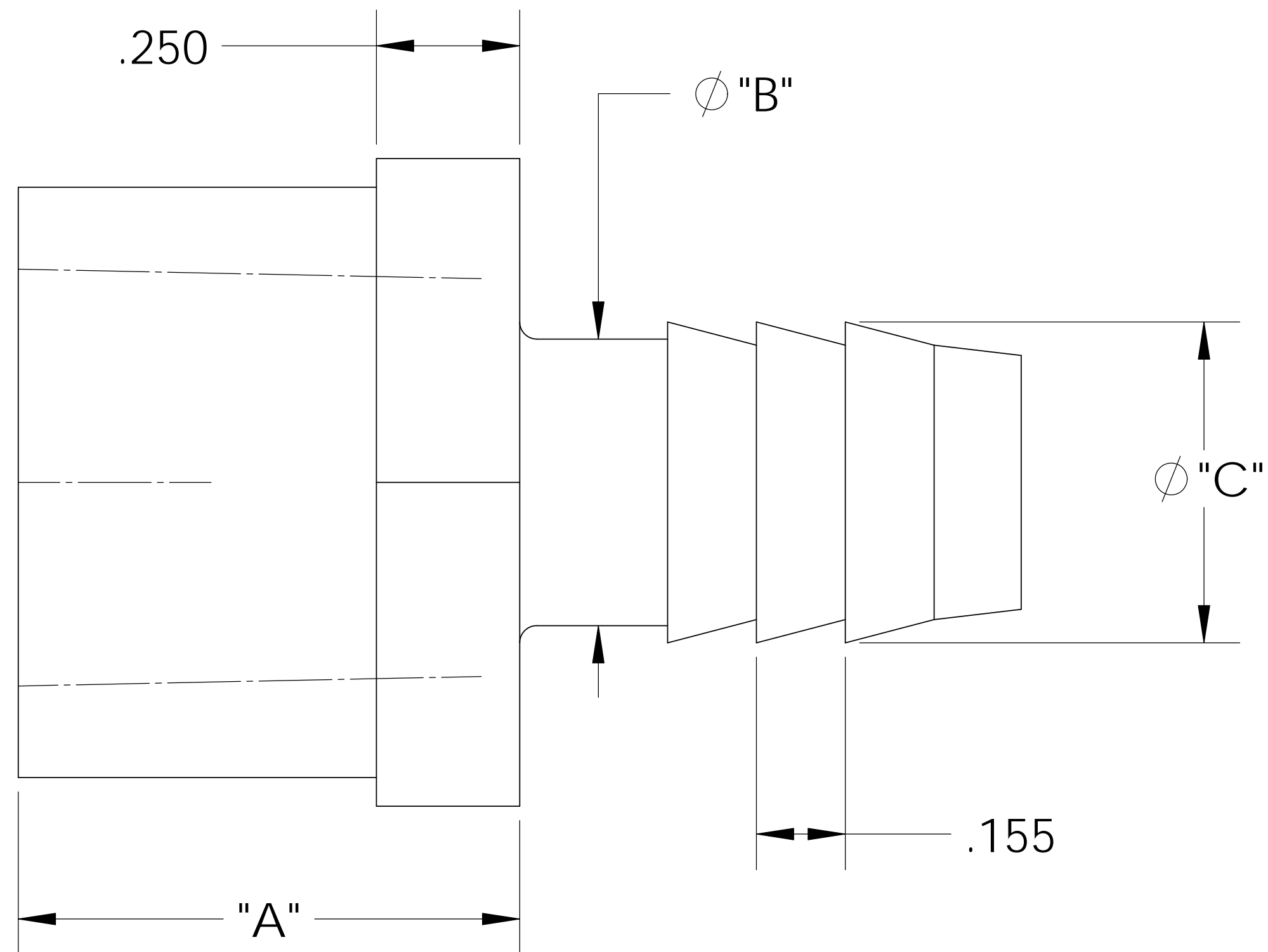
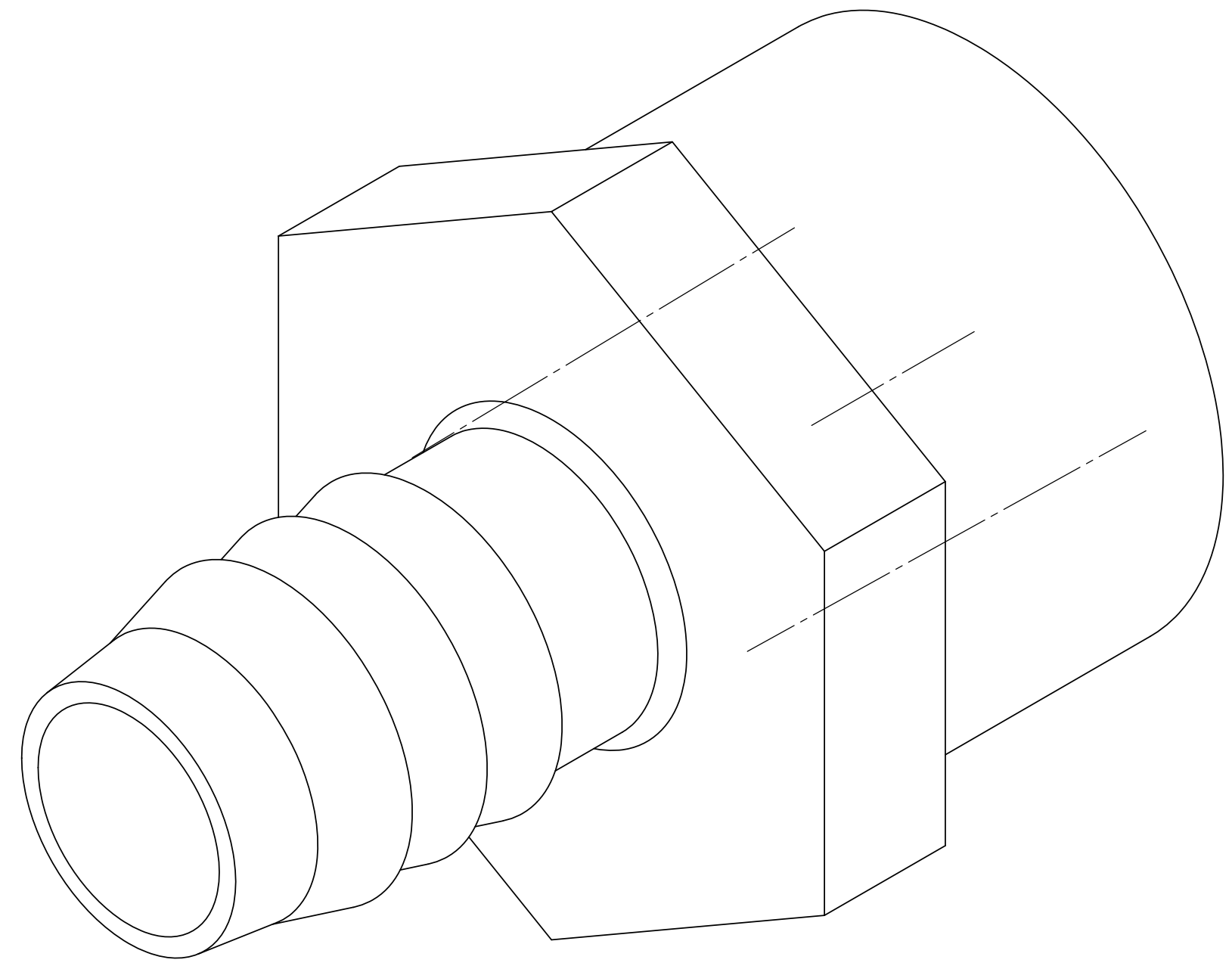


UNCONTROLLED IF PRINTED; CONTROLLED DOCUMENT LOCATED IN IQMS DOCUMENT CONTROL



CATALOG NO.	DESCRIPTION	MATERIAL	DIM "A"	DIM "B"	DIM "C"	DIM "D"	DIM "E"	DIM "F"	DIM "G"
TAF1088/PP	1/2" NPT X 1/2" PP	POLYPROPYLENE	.870	.495	.550	1.12	.370	1.73	1.020
TAF1088/N	1/2" NPT X 1/2" N	NYLON	.875	.500	.560	1.13	.375	1.75	1.030

SHOWN

NOTES:

- 1) POLYPROPYLENE HAS COLOR OPTIONS:
 BLACK = TAF1088/PPB
 NATURAL = TAF1088/PPN

PROPRIETARY AND CONFIDENTIAL
 THE INFORMATION CONTAINED IN THIS DRAWING IS THE SOLE PROPERTY OF THOGUS PRODUCTS COMPANY. ANY REPRODUCTION IN PART OR AS A WHOLE WITHOUT THE WRITTEN PERMISSION OF THOGUS PRODUCTS COMPANY IS PROHIBITED.

REV	WRO#	DESCRIPTION
C	95.00144	CONVERTED TO 3D FORMAT
HISTORY		

UNLESS OTHERWISE SPECIFIED:
 DIMENSIONS ARE IN INCHES
 TOLERANCES:
 ANGULAR: $\pm 0.5^\circ$
 X.X = ± 0.1
 X.XX = ± 0.05
 X.XXX = ± 0.015
 REMOVE ALL SHARP EDGES AND BURRS
 BLEND ALL RADII TO 0.01IN
 INTERPRET GEOMETRIC TOLERANCING PER: ANSI Y 14.5 1994
 MATERIAL:
 PP, N
 FINISH:
 NA
 THIRD ANGLE PROJECTION:

NAME	DATE
DRAWN JRM	05/24/11
CHECKED KDJ	5/24/11
ENG APPR.	XX/XX/XX
MFG APPR.	XX/XX/XX
Q.A.	XX/XX/XX

Thogus You think it, we can make it...
 33490 PIN OAK, AVON LAKE, OH 44012

TITLE:
1/2" NPT FEMALE X 1/2" BARB ADAPTER

SIZE B	DWG. NO. TAF1088	REV C
------------------	---------------------	-----------------

DO NOT SCALE DRAWING SCALE: 2:1 MASS: SHEET 1 OF 1