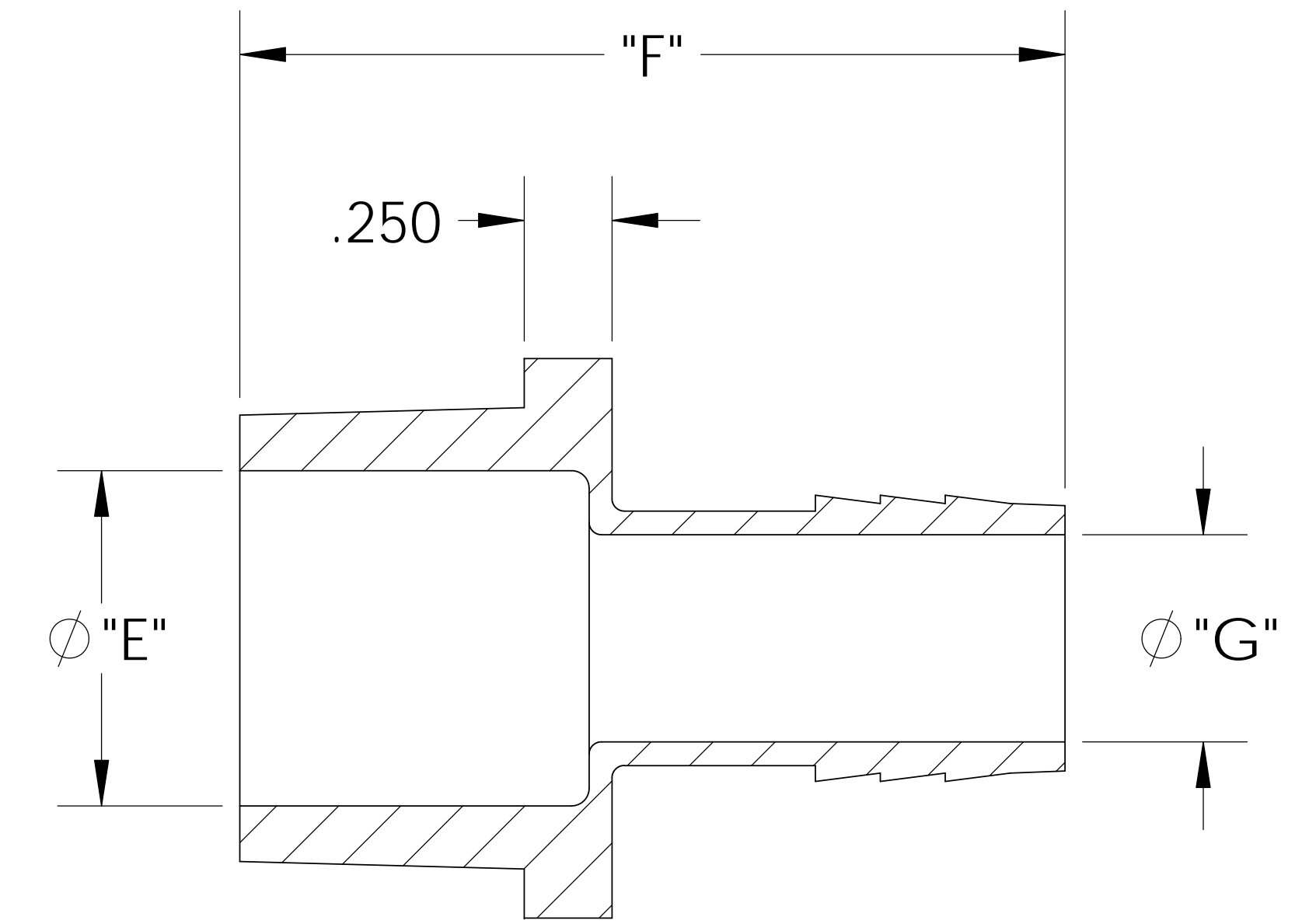
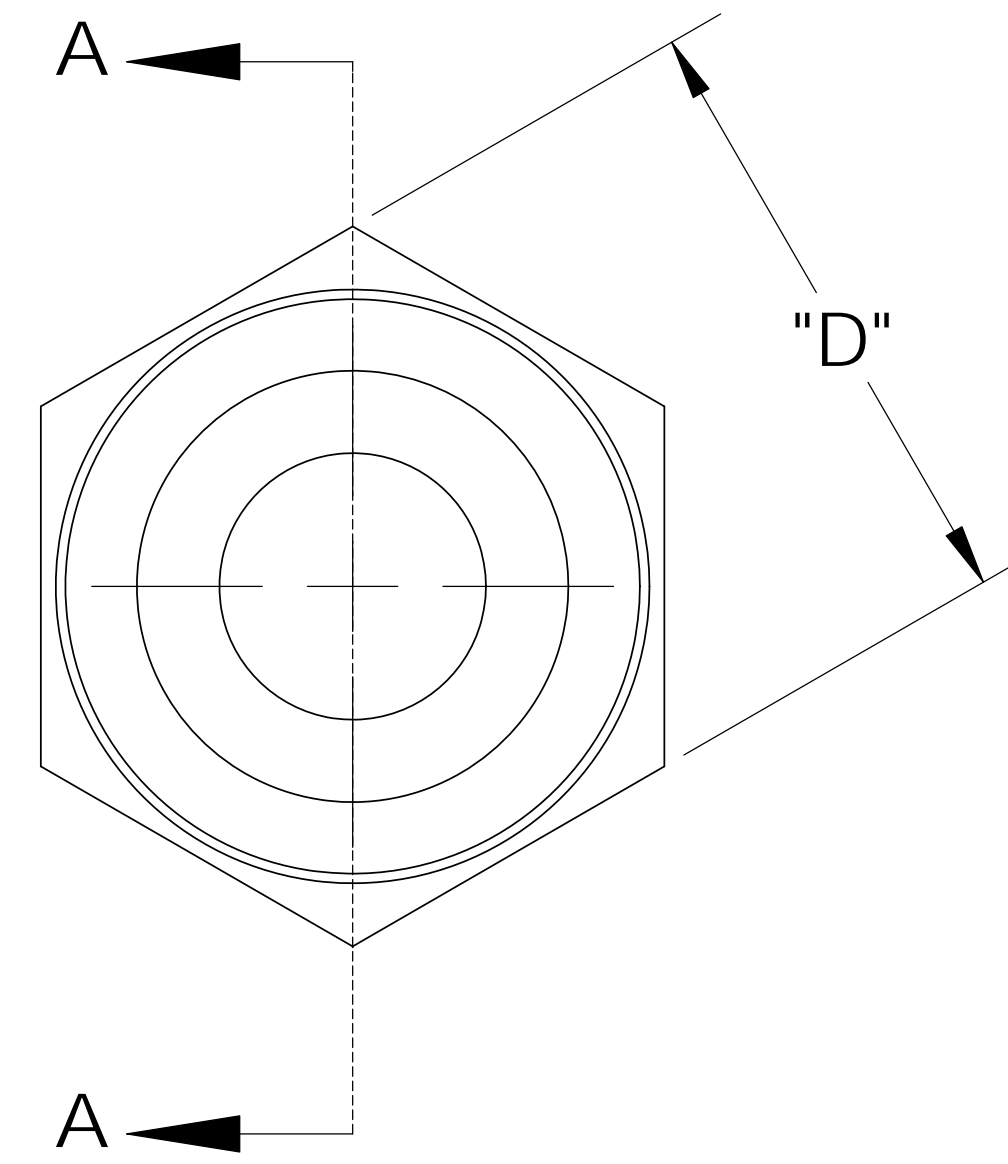
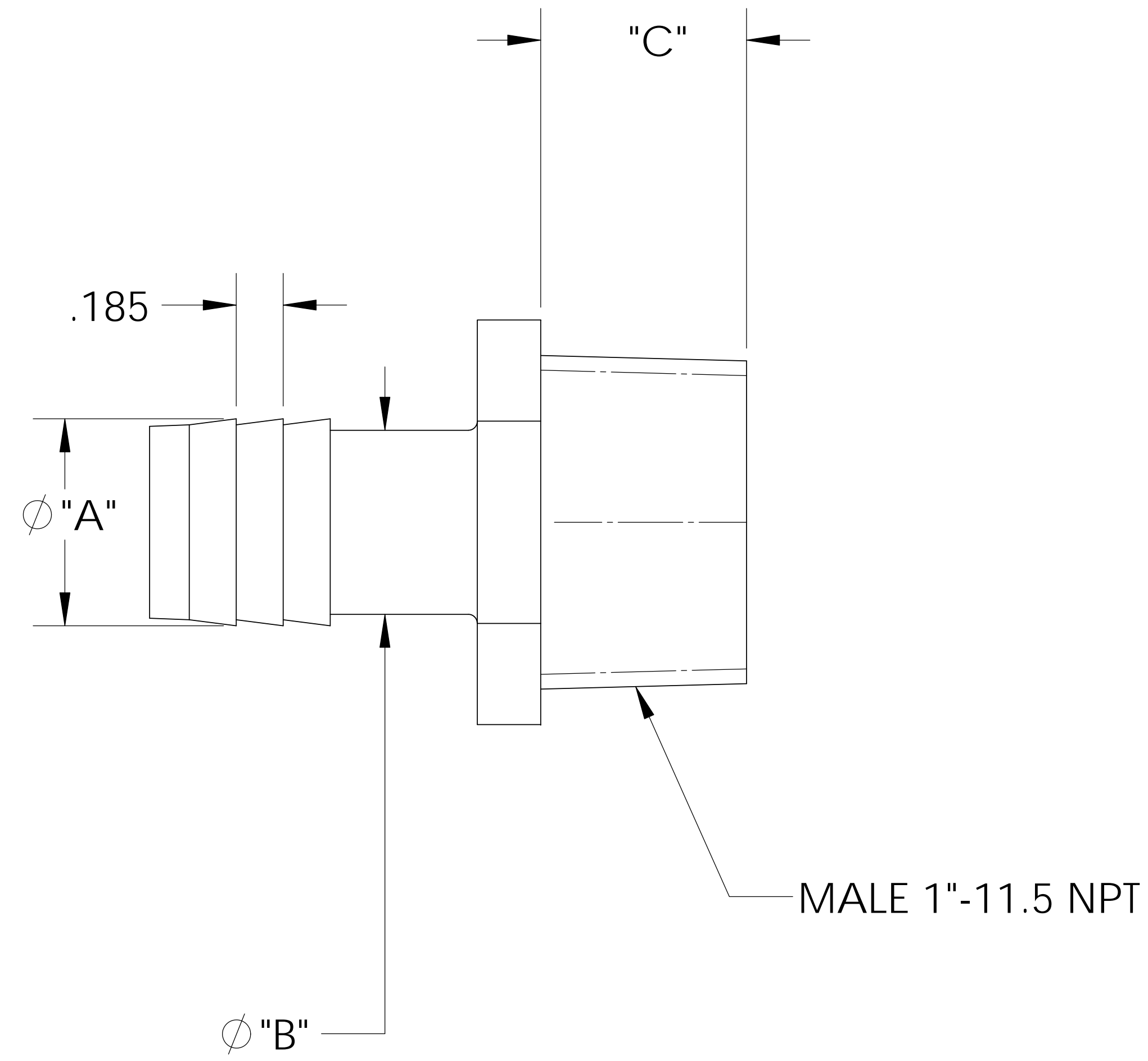
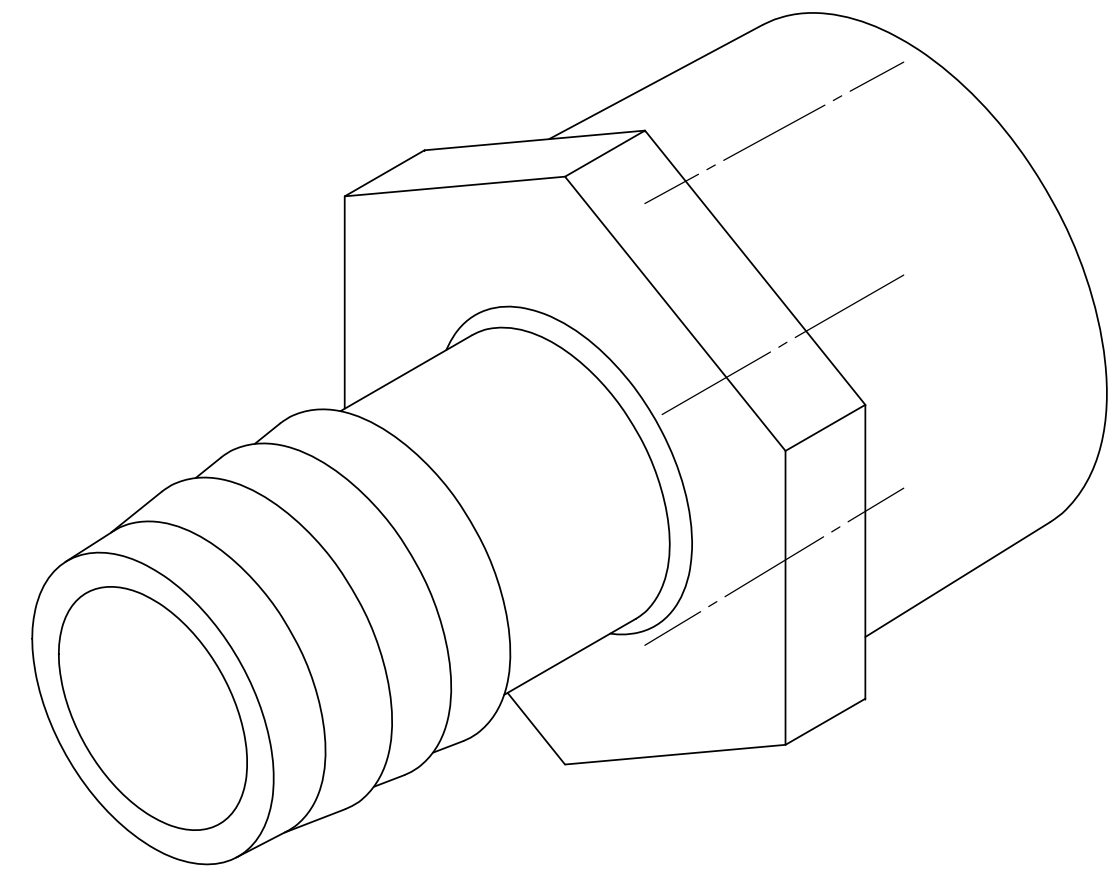


UNCONTROLLED IF PRINTED; CONTROLLED COPIES LOCATED IN IQMS DOCUMENT CONTROL



SECTION A-A

CATALOG NO.	DESCRIPTION	MATERIAL	DIM "A"	DIM "B"	DIM "C"	DIM "D"	DIM "E"	DIM "F"	DIM "G"
TA101612/PP	1" NPT X 3/4" PP	POLYPROPYLENE	.805	.715	.80	1.36	.945	2.33	.585
TA101612/P	1" NPT X 3/4" P	POLYETHYLENE	.795	.720	.79	1.37	.930	2.31	.570
TA101612/N	1" NPT X 3/4" N	NYLON	.815	.725	.81	1.38	.955	2.35	.590

SHOWN

NOTES:


- 1) POLYPROPYLENE HAS COLOR OPTIONS:  
 BLACK = TA101612/PPB  
 NATURAL = TA101612/PPN

**PROPRIETARY AND CONFIDENTIAL**  
 THE INFORMATION CONTAINED IN THIS DRAWING IS THE SOLE PROPERTY OF THOGUS PRODUCTS COMPANY. ANY REPRODUCTION IN PART OR AS A WHOLE WITHOUT THE WRITTEN PERMISSION OF THOGUS PRODUCTS COMPANY IS PROHIBITED.

REV	WRO#	DESCRIPTION
D	95.00072	CONVERTED TO 3D FORMAT
HISTORY		

UNLESS OTHERWISE SPECIFIED:  
 DIMENSIONS ARE IN INCHES  
 TOLERANCES:  
 ANGULAR:  $\pm 0.5^\circ$   
 X.X =  $\pm 0.1$   
 X.XX =  $\pm 0.05$   
 X.XXX =  $\pm 0.015$   
 REMOVE ALL SHARP EDGES AND BURRS  
 BLEND ALL RADII TO 0.01IN  
 INTERPRET GEOMETRIC TOLERANCING PER: ANSI Y 14.5 1994  
 MATERIAL: PP, P, N  
 FINISH: NA  
 THIRD ANGLE PROJECTION:

NAME	DATE
DRAWN JRM	03/18/11
CHECKED KDJ	03/18/11
ENG APPR.	XX/XX/XX
MFG APPR.	XX/XX/XX
Q.A.	XX/XX/XX

  
**Thogus** You think it, we can make it...  
 33490 PIN OAK, AVON LAKE, OH 44012

TITLE: **1" NPT X 3/4" BARB ADAPTER**

SIZE <b>B</b>	DWG. NO. <b>TA101612</b>	REV <b>D</b>
SCALE: 1:1	MASS:	SHEET 1 OF 1

DO NOT SCALE DRAWING