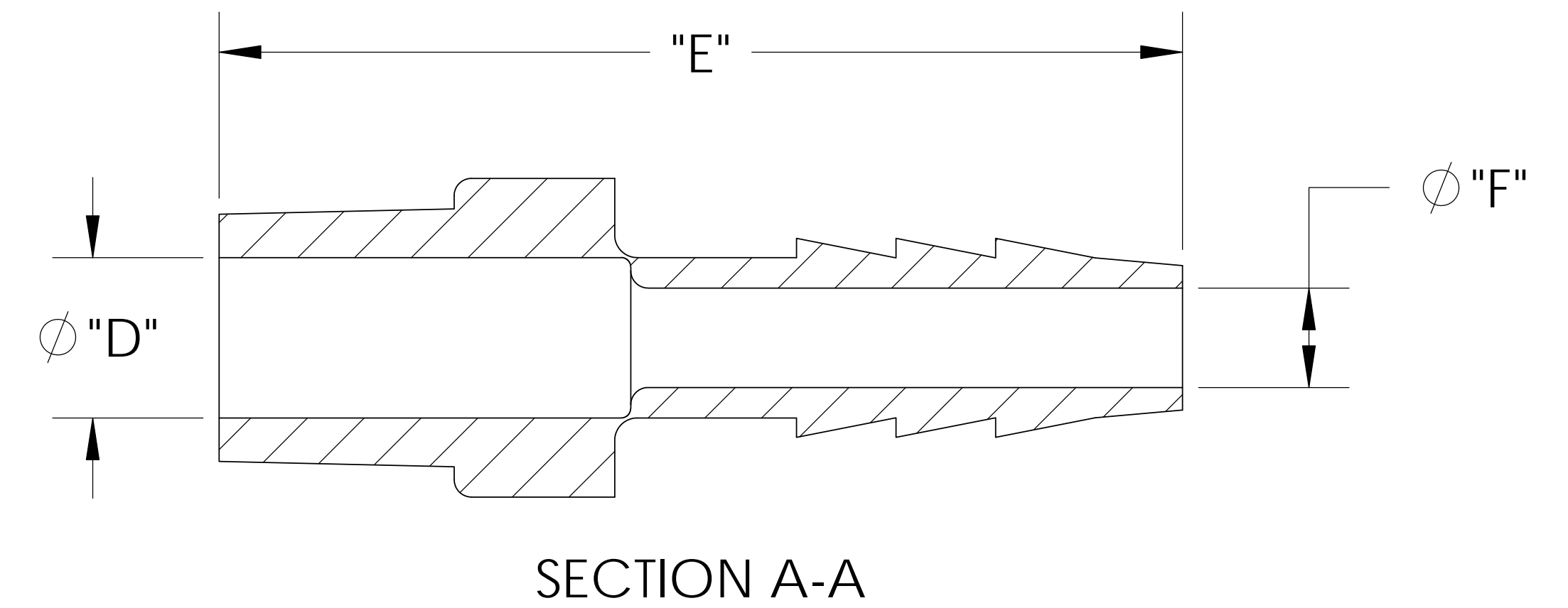
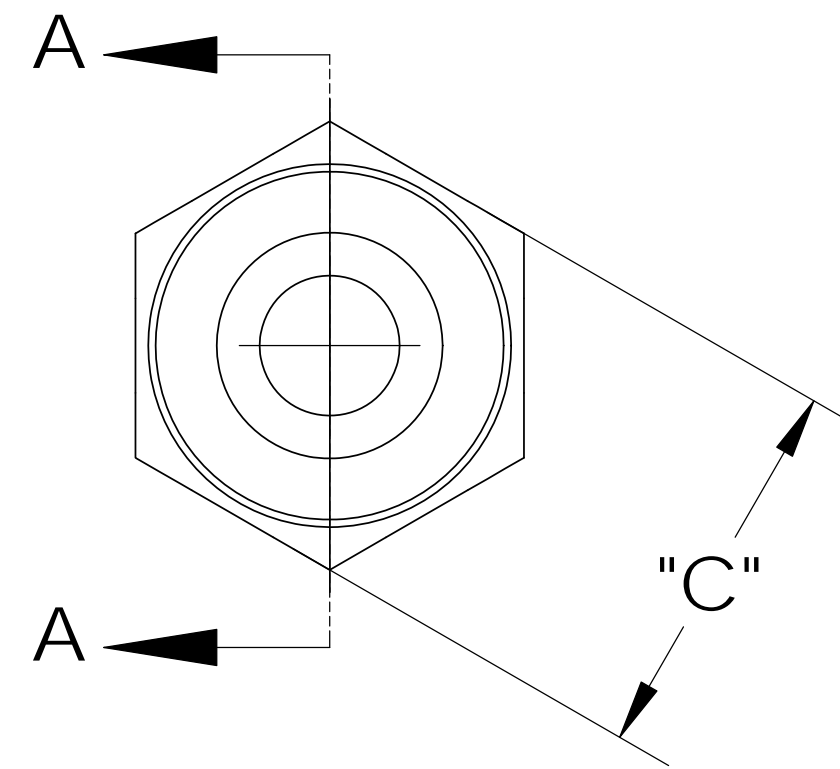
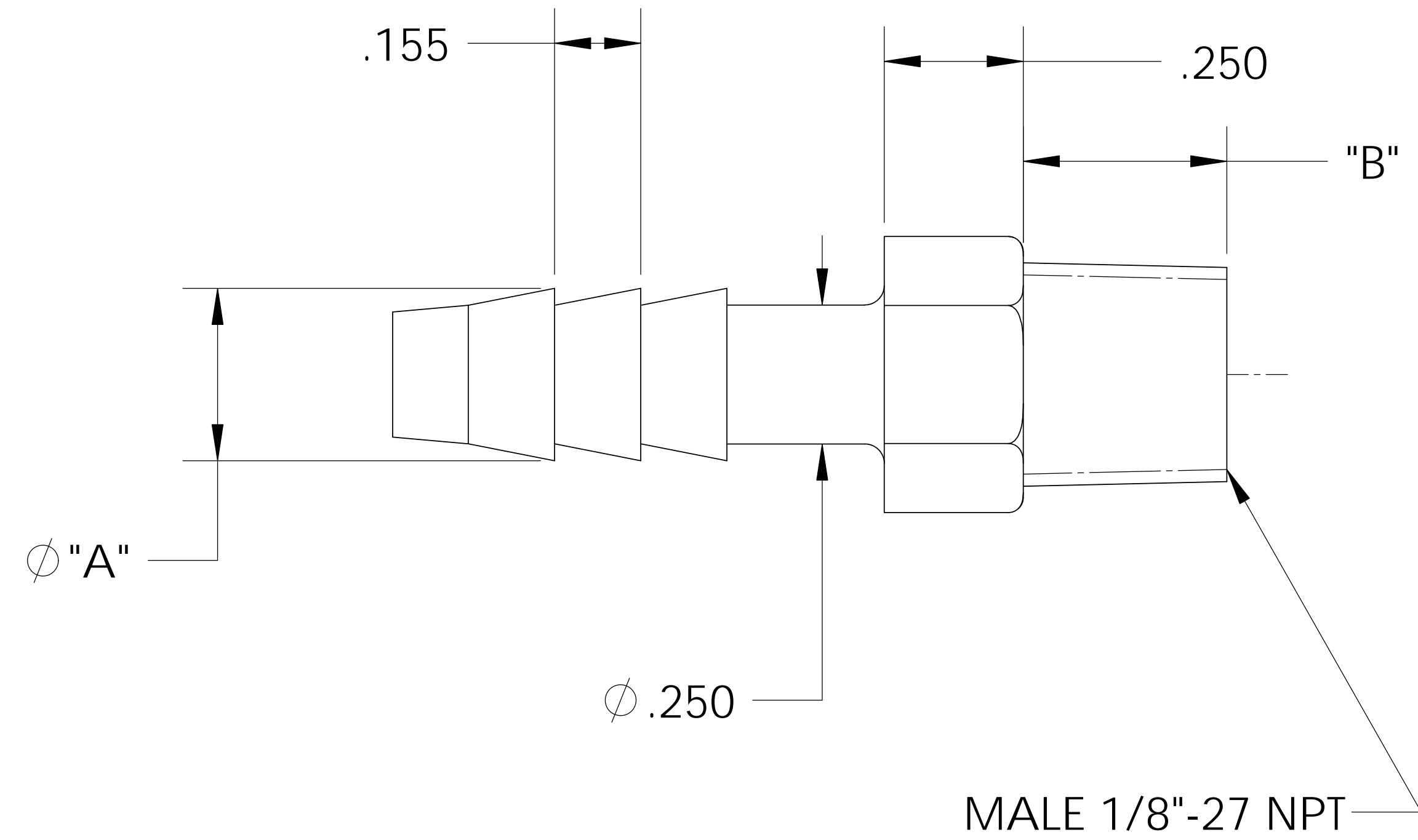
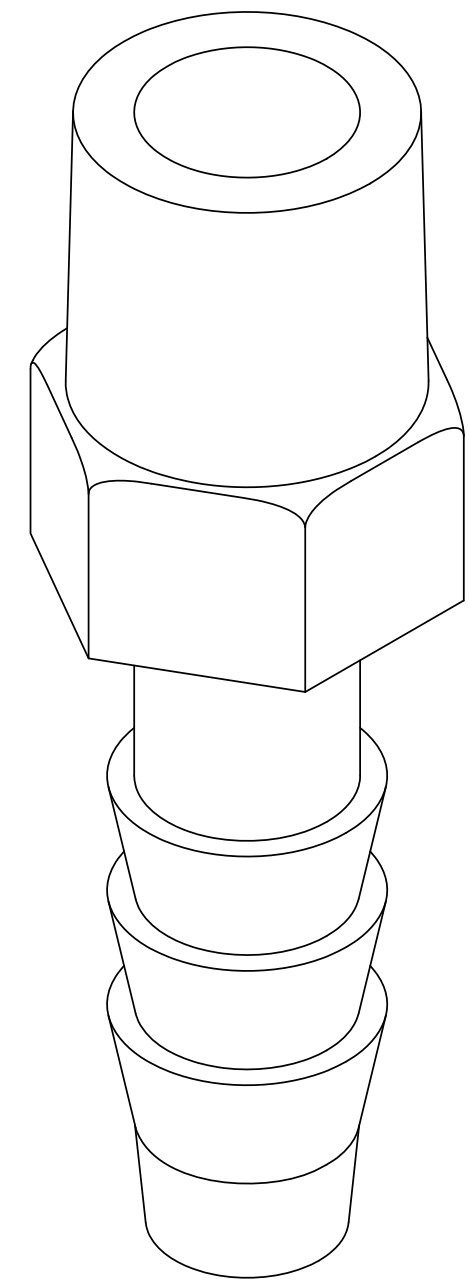


UNCONTROLLED IF PRINTED; CONTROLLED COPY LOCATED IN IQMS DOCUMENT CONTROL



NOTES:

- 1) POLYPROPYLENE HAS COLOR OPTIONS:
BLACK = TA1024/PPB
NATURAL = TA1024/PPN

PROPRIETARY AND CONFIDENTIAL
THE INFORMATION CONTAINED IN THIS DRAWING IS THE SOLE PROPERTY OF THOGUS PRODUCTS COMPANY. ANY REPRODUCTION IN PART OR AS A WHOLE WITHOUT THE WRITTEN PERMISSION OF THOGUS PRODUCTS COMPANY IS PROHIBITED.

SHOWN

CATALOG NO.	DESCRIPTION	MATERIAL	DIM "A"	DIM "B"	DIM "C"	DIM "D"	DIM "E"	DIM "F"
TA1024/PP	1/8" NPT X 1/4" PP	POLYPROPYLENE	.310	.38	.43	.245	1.49	.150
TA1024/P	1/8" NPT X 1/4" P	POLYETHYLENE	.305	.37	.42	.245	1.46	.150
TA1024/N	1/8" NPT X 1/4" N	NYLON	.310	.37	.43	.250	1.50	.155

E	95.00072	CONVERTED TO 3D FORMAT	UNLESS OTHERWISE SPECIFIED: DIMENSIONS ARE IN INCHES TOLERANCES: ANGULAR: $\pm 0.5^\circ$ XX = ± 0.1 XXX = ± 0.05 XXXX = ± 0.015 REMOVE ALL SHARP EDGES AND BURRS BLEND ALL RADII TO 0.01IN INTERPRET GEOMETRIC TOLERANCING PER: ANSI Y 14.5 1994 MATERIAL: PP, P, N FINISH: NA THIRD ANGLE PROJECTION:	NAME	DATE	 33490 PIN OAK, AVON LAKE, OH 44012 TITLE: 1/8" NPT X 1/4" BARB ADAPTER	
				DRAWN	JRM		03/17/11
				CHECKED	KDJ		03/17/11
				ENG APPR.	JM		03/18/11
				MFG APPR.	ML		03/18/11
			Q.A.	NJW	03/18/11	REV E	
REV	WRO#	DESCRIPTION	COMMENTS:				SIZE B DWG. NO. TA1024
HISTORY			DO NOT SCALE DRAWING			SCALE: 2:1 MASS:	SHEET 1 OF 1