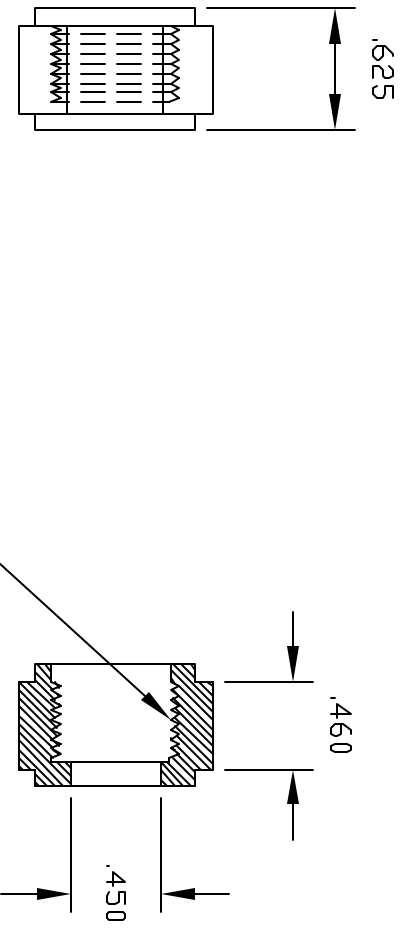
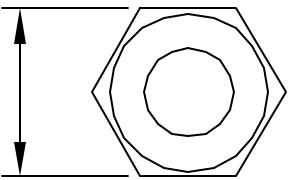


REVISIONS				
ZINC	REV	DESCRIPTION	DATE	APPROVED
	A	REDRAWN & RELEASED	1/98	1/98



FEMALE 3/8" NPT

TO MATE WITH THOGUS INSERT ADAPTER
SNA6, 3/8" INSERT



.88

CONTROLLED DOCUMENT
ONLY IF IN RED

CONFIDENTIAL
THIS PRINT AND THE SPECIFICATIONS ARE THE PROPERTY OF THOGUS PRODUCTS COMPANY AND HAVE BEEN ISSUED WITH THE UNDERSTANDING THAT REVEALING THE DESIGN TO OTHERS OR REPRODUCING IT FOR OTHERS AND WILL BE RETURNED UPON REQUEST.

UNLESS OTHERWISE SPECIFIED DIMENSIONS ARE IN INCHES		TOLERANCES UNLESS SHOWN OTHERWISE	
DRAWN NM		DATE 1/98	
MATERIAL POLYPROPYLENE BLACK		Part Number 3/8 NPT FEMALE SWIVEL NUT	
THOGUS PRODUCTS		33490 PIN DAK PARKWAY AYDON LAKE OHIO 44012	
Part Number SNA6/PPB	Scale 1:1	Sheet 1 of 1	Rev A

FORM 100-1 (REV. 10-77) PREPARED BY THE U.S. GOVERNMENT PRINTING OFFICE