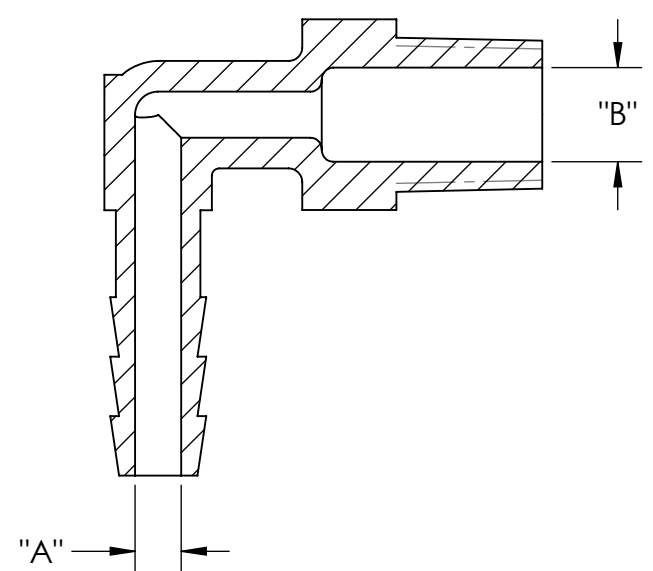
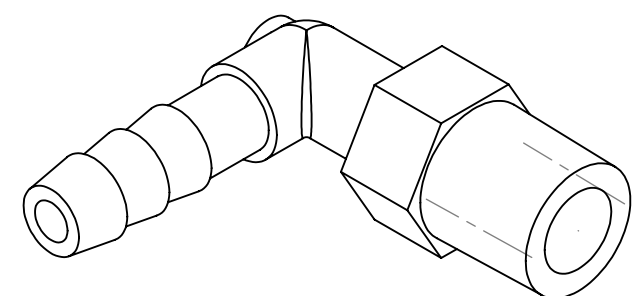
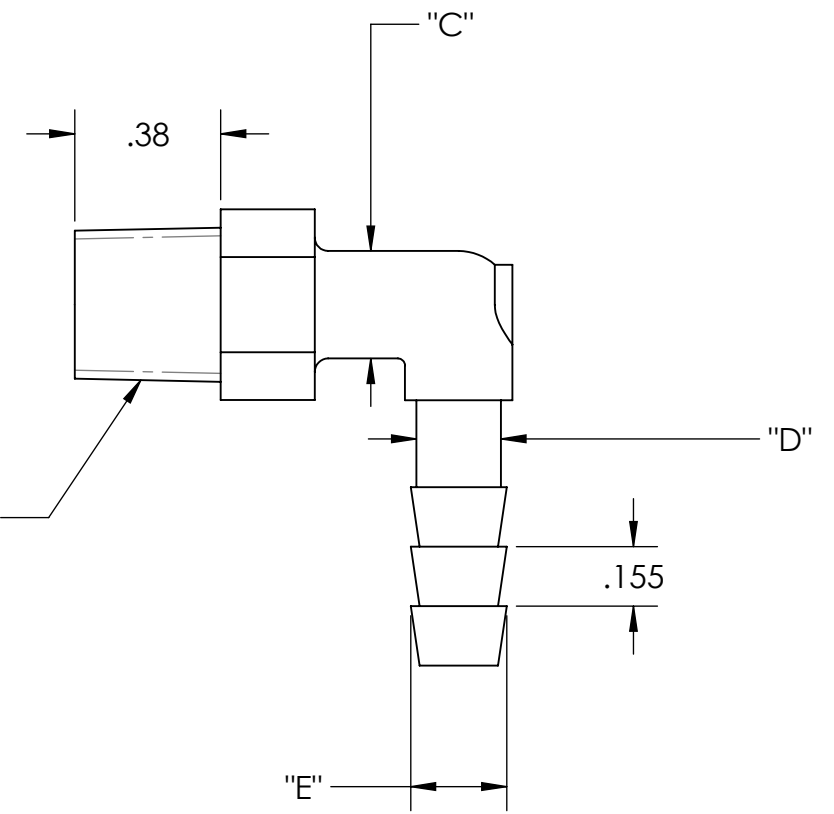
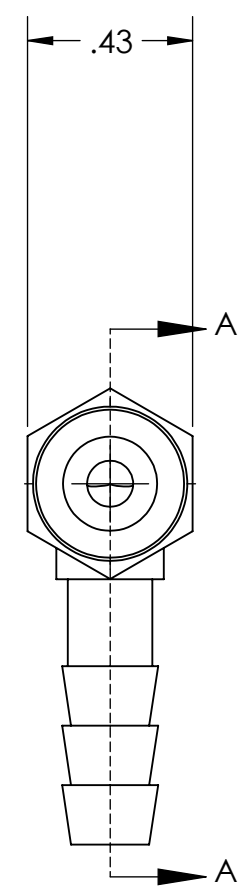


UNCONTROLLED IF PRINTED; CONTROLLED COPY LOCATED IN IQMS DOCUMENT CONTROL



SECTION A-A



CATALOG NO.	DESCRIPTION	MATERIAL	DIM "A"	DIM "B"	DIM "C"	DIM "D"	DIM "E"
TE2023/N	1/8" NPT X 3/16" N	NYLON	0.125	0.250	0.280	0.230	0.250
TE2023/PP	1/8" NPT X 3/16" PP	POLYPROPYLENE	0.125	0.250	0.275	0.220	0.250
TE2023/P	1/8" NPT X 3/16" P	POLYETHYLENE	0.120	0.245	0.280	0.220	0.250

NOTES:

- 1) POLYPROPYLENE HAS COLOR OPTIONS:  
BLACK: TE2023/PPB  
NATURAL: TE2023/PPN
- 2) NYLON HAS COLOR OPTIONS  
BLACK: TE2023/BN

**PROPRIETARY AND CONFIDENTIAL**  
THE INFORMATION CONTAINED IN THIS DRAWING IS THE SOLE PROPERTY OF THOGUS PRODUCTS COMPANY. ANY REPRODUCTION IN PART OR AS A WHOLE WITHOUT THE WRITTEN PERMISSION OF THOGUS PRODUCTS COMPANY IS PROHIBITED.

REV	WRO#	DESCRIPTION
C	95.00065	CONVERTED TO 3D FORMAT
D		ADDED N AND PP DIMS
E		ADD BLACK NYLON
HISTORY		

UNLESS OTHERWISE SPECIFIED:		NAME	DATE
DIMENSIONS ARE IN INCHES		DRAWN	CMS 10/29/13
TOLERANCES:		CHECKED	xx/xx/xx
ANGULAR: ±0.5°		ENG APPR.	xx/xx/xx
X.X = ± 0.1		MFG APPR.	xx/xx/xx
X.XX = ± 0.05		Q.A.	xx/xx/xx
X.XXX = ± 0.015		COMMENTS:	
REMOVE ALL SHARP EDGES AND BURRS			
BLEND ALL RADII TO 0.01IN			
INTERPRET GEOMETRIC TOLERANCING PER: ANSI Y 14.5 1994			
MATERIAL: P			
FINISH: NA			
THIRD ANGLE PROJECTION:			

**Thogus** You think it, we can make it...  
 33490 PIN OAK, AVON LAKE, OH 44012

TITLE: **1/8" NPT X 3/16" BARB ELBOW**

SIZE <b>B</b>	DWG. NO. <b>TE2023</b>	REV <b>E</b>
SCALE: 2:1	MASS:	SHEET 1 OF 1

DO NOT SCALE DRAWING