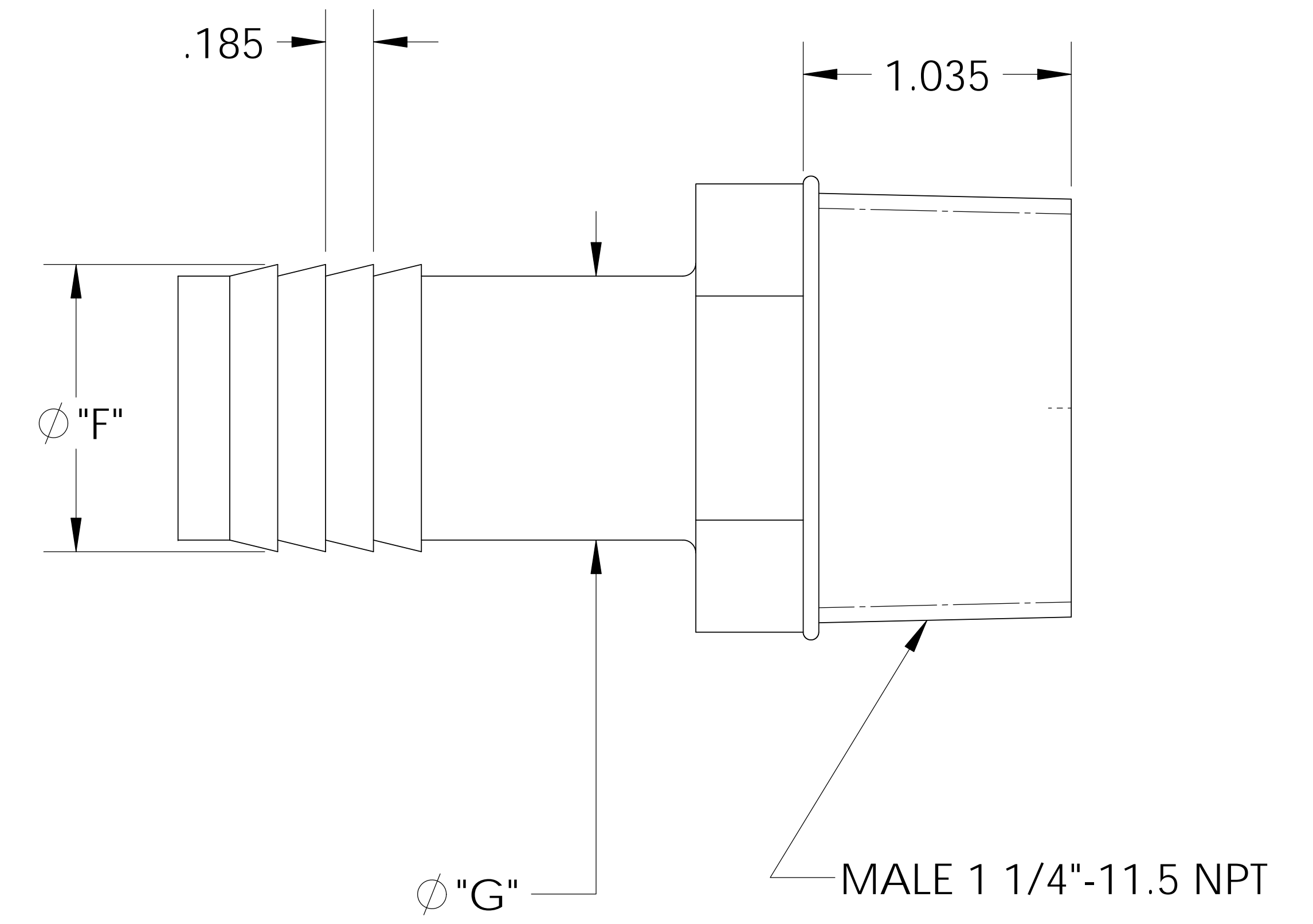
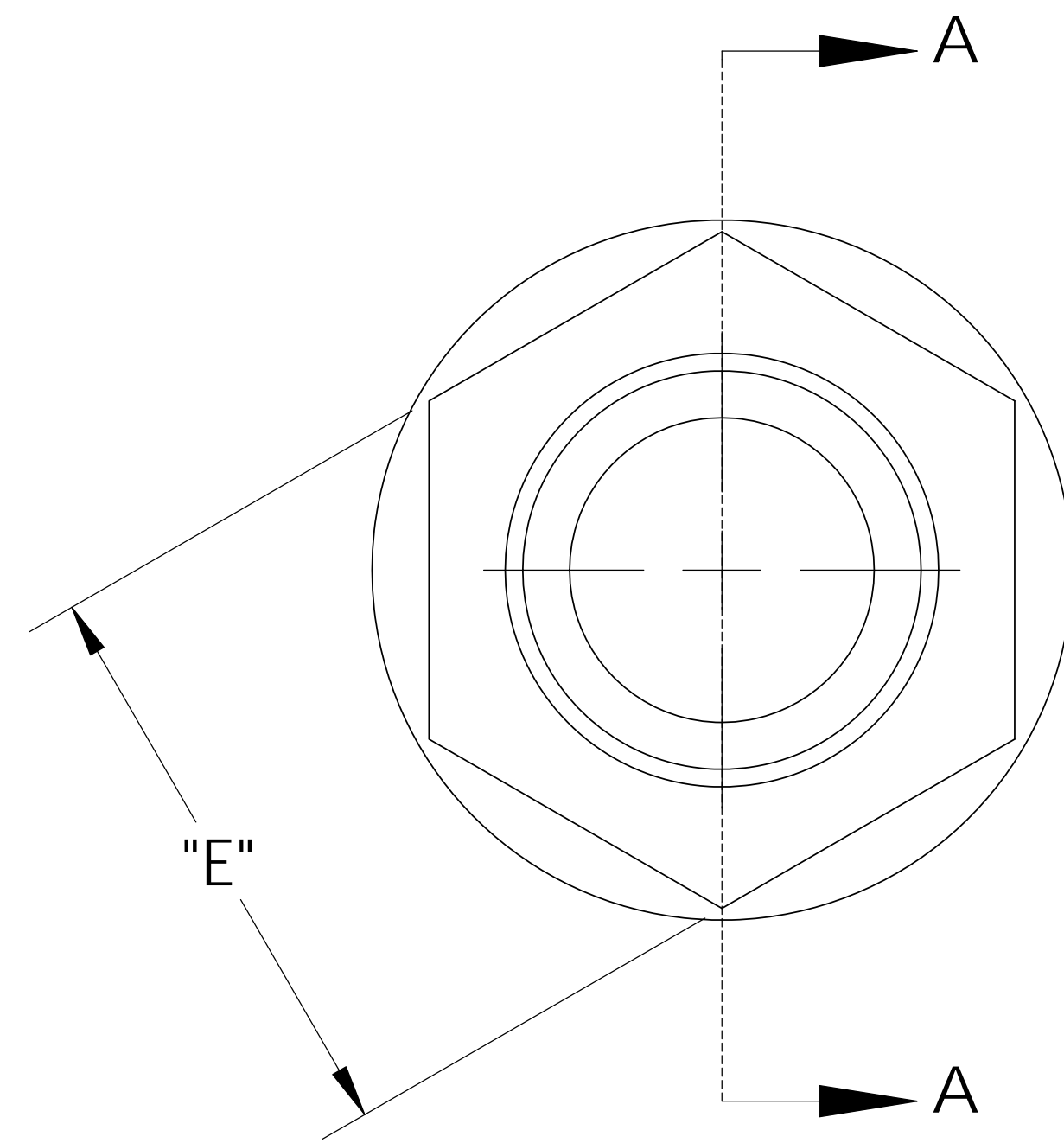
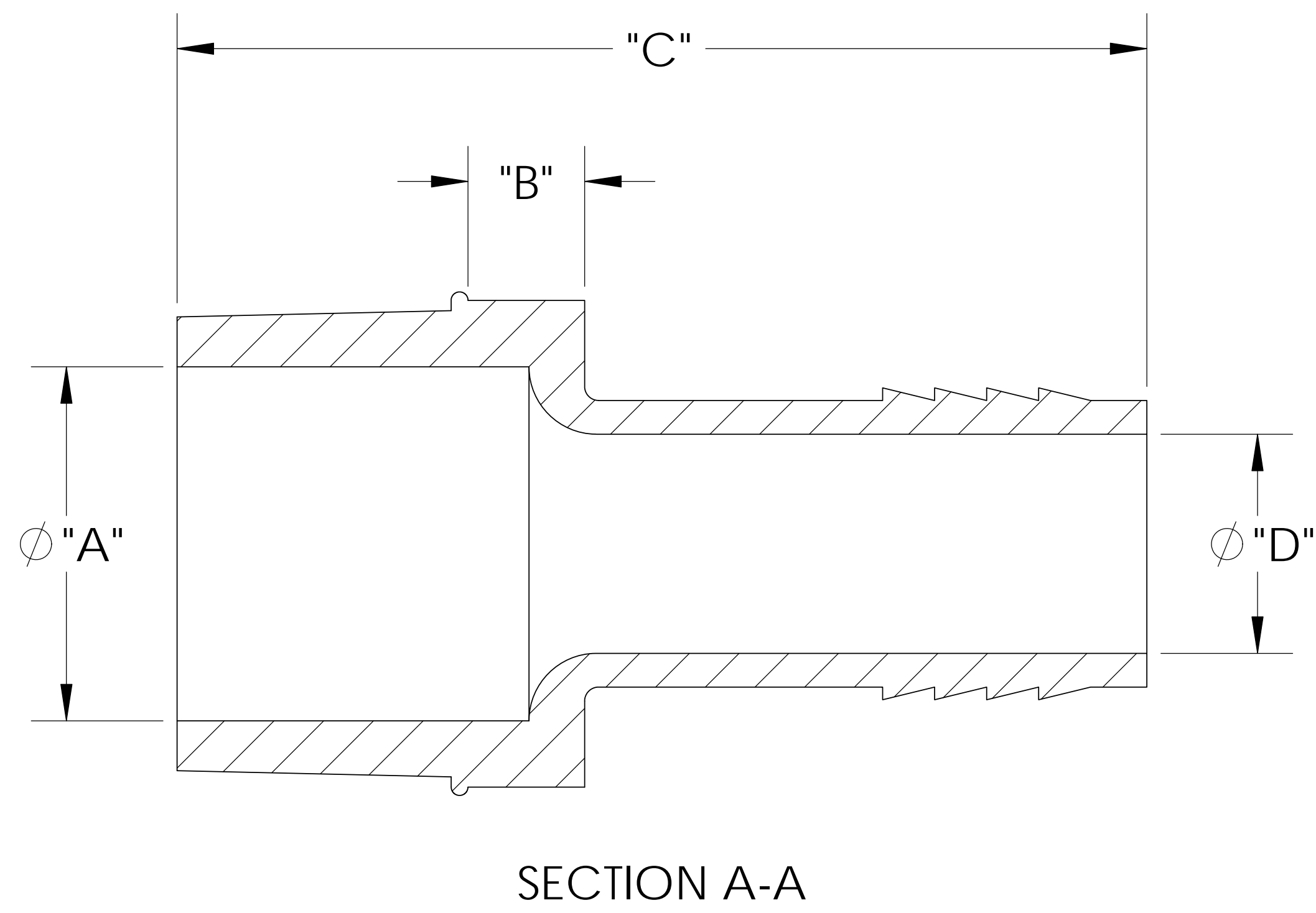
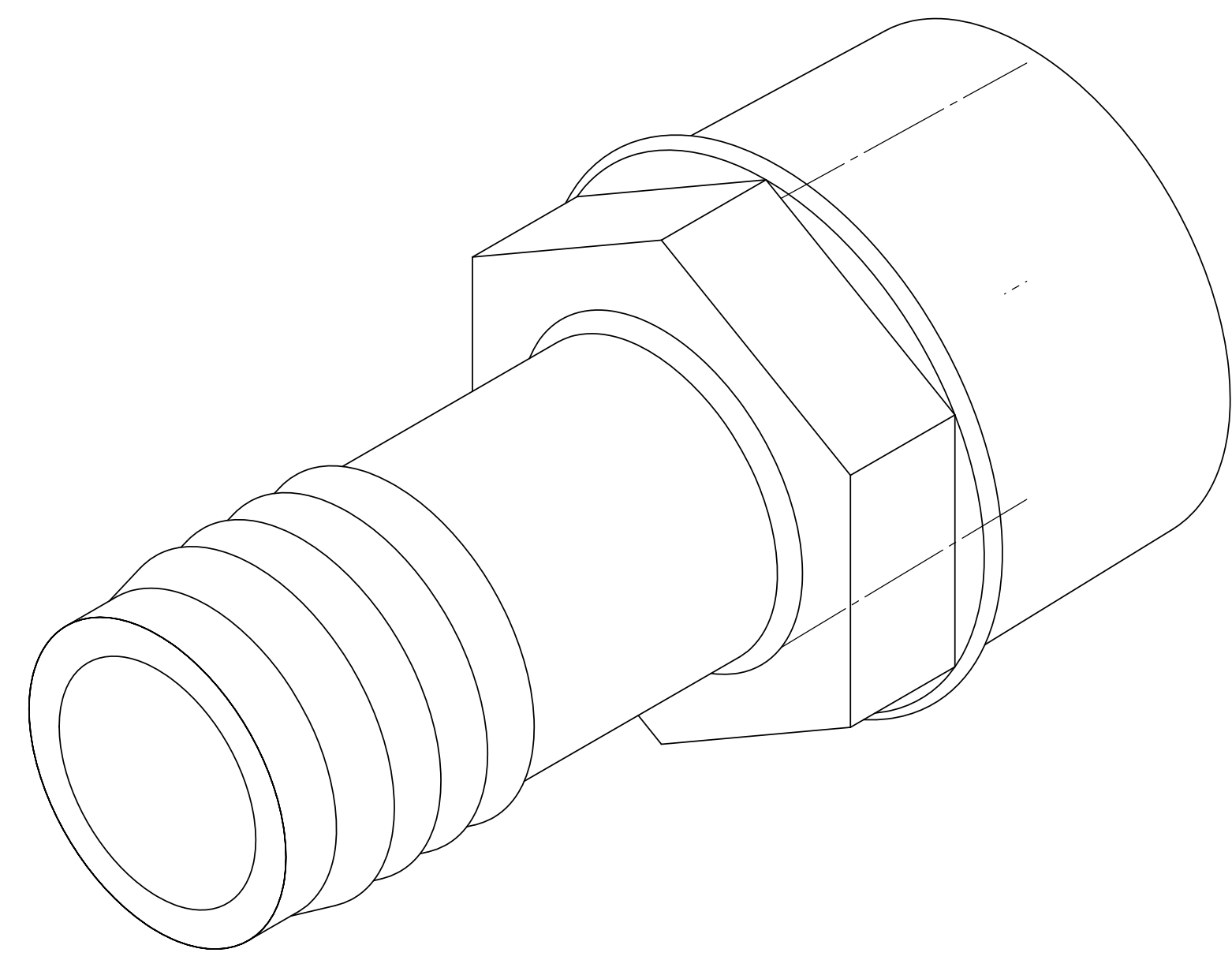


UNCONTROLLED IF PRINTED; CONTROLLED COPY LOCATED IN IQMS DOCUMENT CONTROL



CATALOG NO.	DESCRIPTION	MATERIAL	DIM "A"	DIM "B"	DIM "C"	DIM "D"	DIM "E"	DIM "F"	DIM "G"
TA102016/PP	1 1/4" NPT X 1" PP	POLYPROPYLENE	1.250	.410	3.43	.765	1.48	1.090	1.010
TA102016/N	1 1/4" NPT X 1" N	NYLON	1.260	.415	3.45	.780	1.500	1.110	1.020

SHOWN

REV	WRO#	DESCRIPTION
C	95.00072	CONVERTED TO 3D FORMAT

UNLESS OTHERWISE SPECIFIED:  
 DIMENSIONS ARE IN INCHES  
 TOLERANCES:  
 ANGULAR:  $\pm 0.5^\circ$   
 XX =  $\pm 0.1$   
 X.XX =  $\pm 0.05$   
 X.XXX =  $\pm 0.015$   
 REMOVE ALL SHARP EDGES AND BURRS  
 BLEND ALL RADII TO 0.01IN  
 INTERPRET GEOMETRIC TOLERANCING PER: ANSI Y 14.5 1994  
 MATERIAL: PP, N  
 FINISH: NA  
 THIRD ANGLE PROJECTION:

NAME	DATE
DRAWN JRM	03/22/11
CHECKED KDJ	03/22/11
ENG APPR.	XX/XX/XX
MFG APPR.	XX/XX/XX
Q.A.	XX/XX/XX

**Thogus** You think it, we can make it...  
 33490 PIN OAK, AVON LAKE, OH 44012

TITLE: **1 1/4" NPT X 1" BARB ADAPTER**

SIZE **B** DWG. NO. **TA102016** REV **C**

DO NOT SCALE DRAWING SCALE: 1:1 MASS: SHEET 1 OF 1

NOTES:  
 1) POLYPROPYLENE HAS COLOR OPTIONS:  
 BLACK = TA102016/PPB  
 NATURAL = TA102016/PPN

**PROPRIETARY AND CONFIDENTIAL**  
 THE INFORMATION CONTAINED IN THIS DRAWING IS THE SOLE PROPERTY OF THOGUS PRODUCTS COMPANY. ANY REPRODUCTION IN PART OR AS A WHOLE WITHOUT THE WRITTEN PERMISSION OF THOGUS PRODUCTS COMPANY IS PROHIBITED.