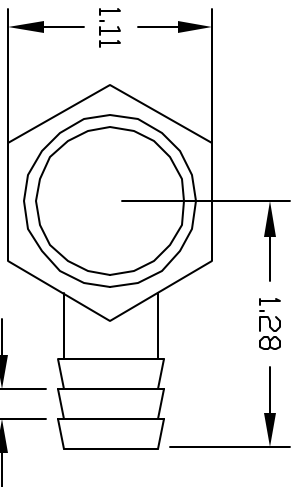
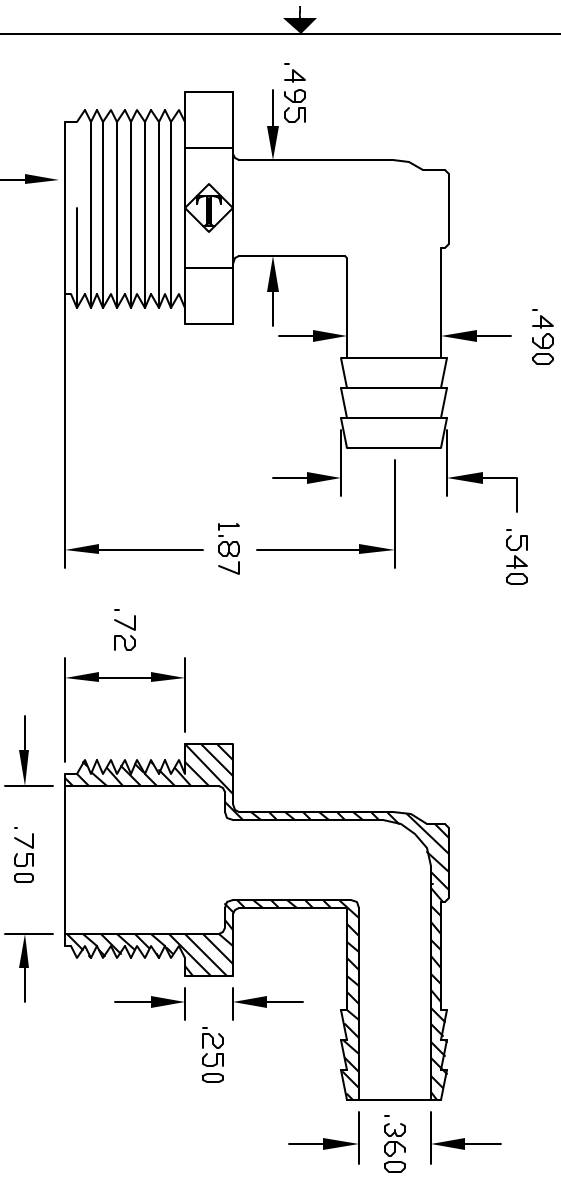


REVISIONS			
REV	DESCRIPTION	DATE	APPROVED
A	DRAWN & RELEASED	9/97	9/97
B	.395 GATE PAD ADDED	6/98	6/98
C	REMOVED L FROM PART NO.	02/16/00	BM
D	ADD 'L' TO PART NO.	4/19/00	BM



3/4" NPT MALE

CONTROLLED DOCUMENT
ONLY IF IN RED

CONFIDENTIAL
THIS PRINT AND THE SPECIFICATIONS ARE THE PROPERTY OF THOGUS PRODUCTS COMPANY AND HAVE BEEN ISSUED WITH THE UNDERSTANDING THAT IT IS TO BE KEPT FOR THE MANUFACTURE OF THIS PART ONLY AND WILL BE RETURNED UPON REQUEST.

UNLESS OTHERWISE SPECIFIED DIMENSIONS ARE IN INCHES		TOLERANCES UNLESS SHOWN OTHERWISE	
XXX +/-.05	XX +/-.05	XX +/-.05	XX +/-.05
XXX +/-.05	XX +/-.05	XX +/-.05	XX +/-.05
DATE	9/97	PART NUMBER	TE20128L/P
DRAWN	NM	MATERIAL	POLYETHYLENE
SCALE	1:1	SHEET	1 of 1
PART NAME		REV	
3/4 NPT X 1/2 BARB ELBOW		D	
THOGUS PRODUCTS		33597 PIN DAK PARKWAY	
		AYDN LAKE OHIO 44012	

100% INSPECTION REQUIRED FOR ALL DIMENSIONS