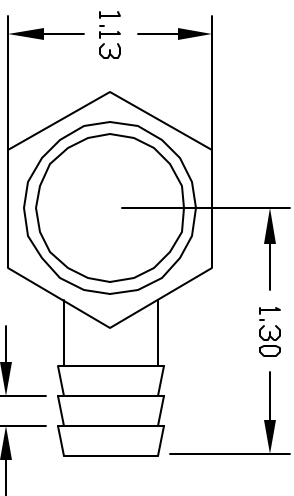
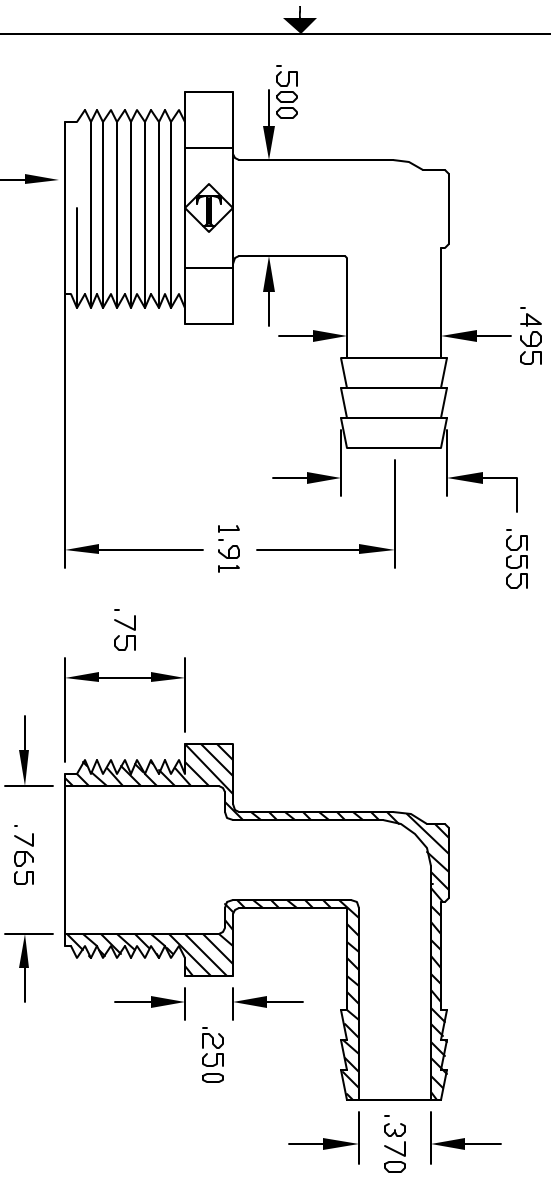


| REV | DESCRIPTION | DATE | APPROVED |
|-----|-------------------------|----------|----------|
| A | DRAWN & RELEASED | 9/97 | 9/97 |
| B | .395 GATE PAD ADDED | 6/98 | 6/98 |
| C | REMOVED L FROM PART NO. | 02/16/00 | BM |
| D | ADD 'L' TO PART NO. | 4/19/00 | BM |
| E | UPDATE DWG | 9/07 | 9/07 |



3/4" NPT MALE

CONTROLLED DOCUMENT
ONLY IF IN RED

CONFIDENTIAL
THIS PRINT AND THE SPECIFICATIONS ARE THE PROPERTY OF THOGUS PRODUCTS COMPANY AND HAVE BEEN ISSUED WITH THE UNDERSTANDING THAT IT IS TO BE KEPT FOR THE MANUFACTURE OF THIS PART AND WILL BE RETURNED UPON REQUEST.

| | | | |
|---|--------------|--|------|
| UNLESS OTHERWISE SPECIFIED DIMENSIONS ARE IN INCHES | | PART NAME | |
| DECIMAL FRACTIONS | THIRD ANGLES | 3/4 NPT X 1/2 BARB ELBOW | |
| XX +/- .05 | 1/4 .05 | DRAWN | DATE |
| XXX +/- .015 | 1/4 .05 | NM | 9/97 |
| MATERIAL | | Part Number | |
| NYLON | | TE20128L/N | |
| SCALE 1:1 | | SHEET 1 of 1 | |
| THOGUS PRODUCTS | | 33597 PIN DAK PARKWAY AYDON LAKE OHIO 44012 | |
| REV | | REV | |
| E | | E | |