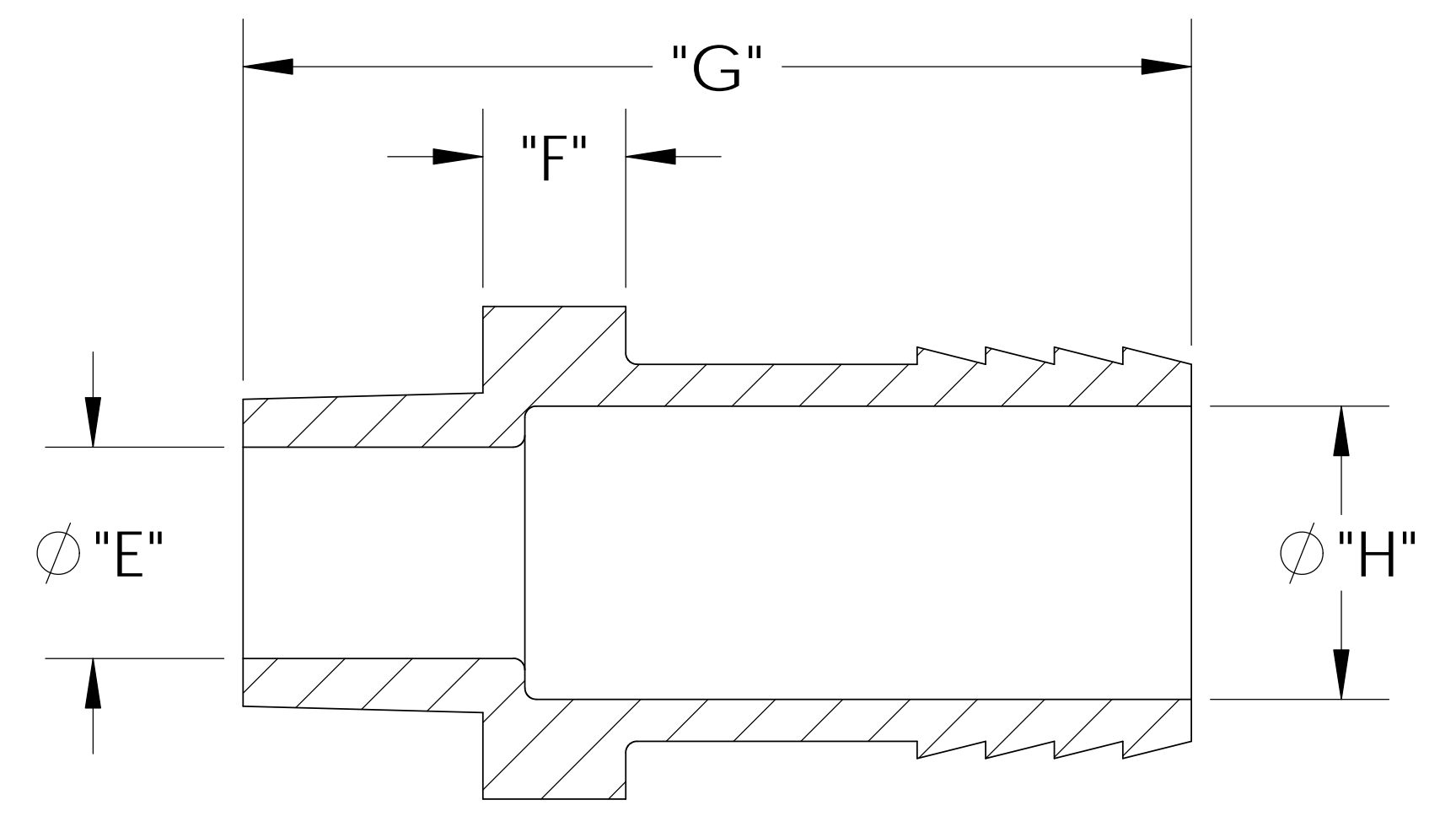
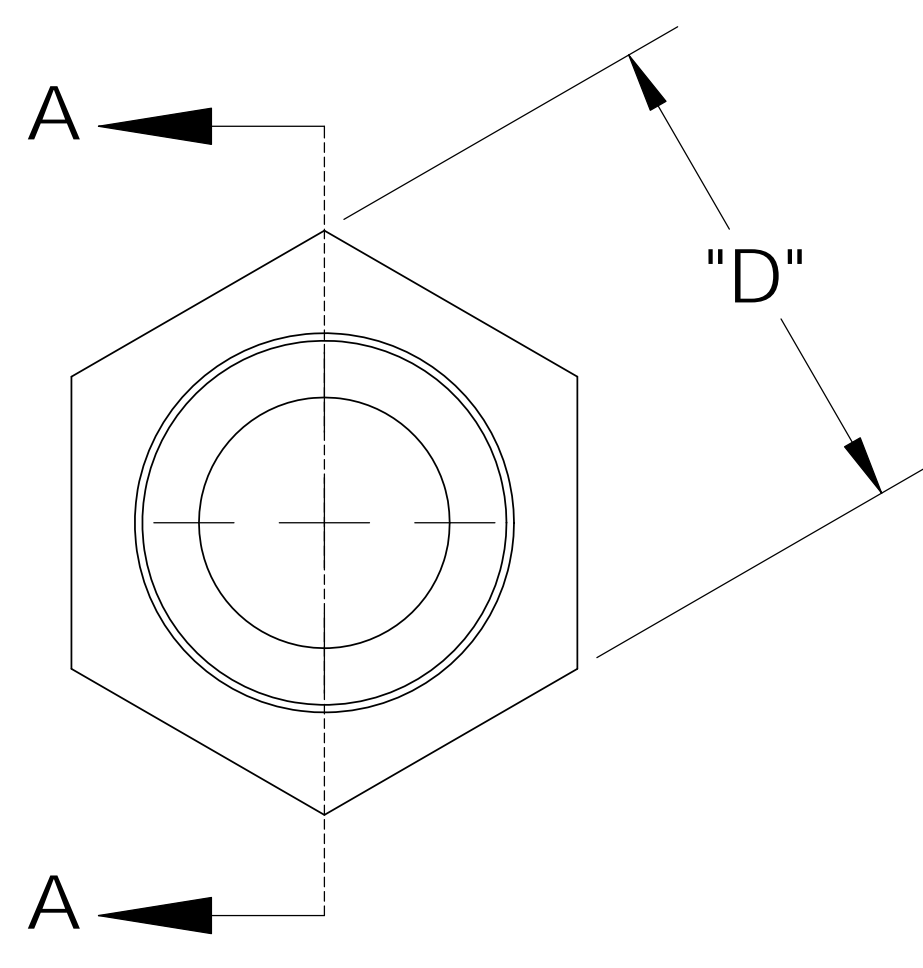
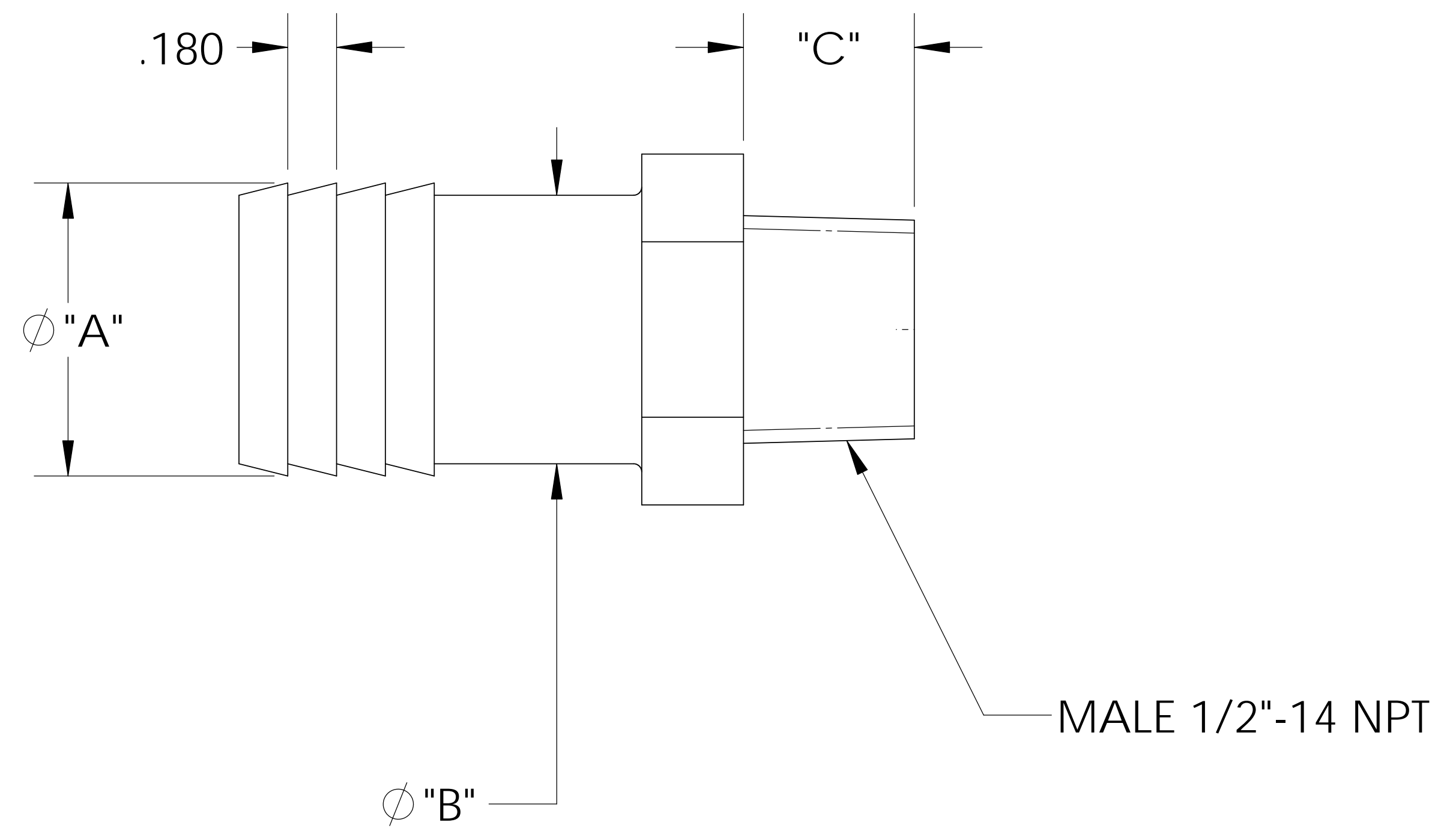
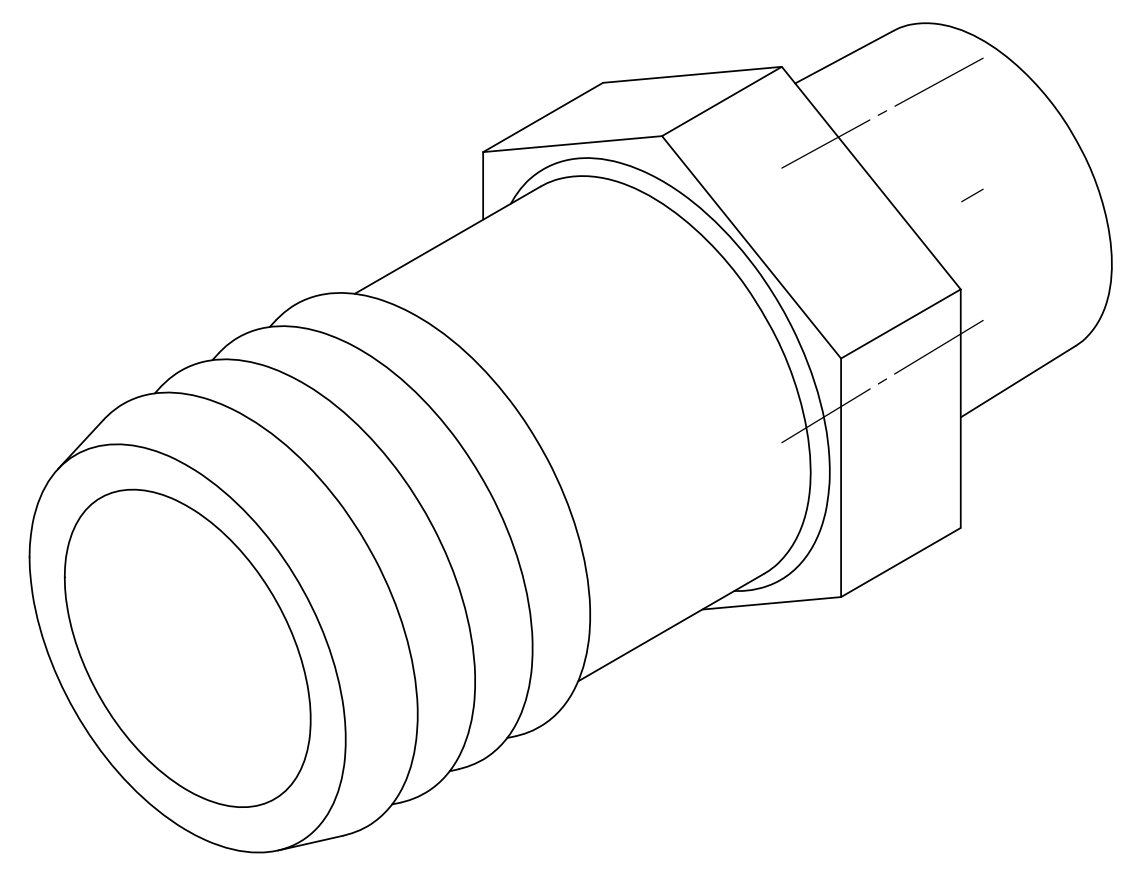


UNCONTROLLED IF PRINTED; CONTROLLED COPY LOCATED IN IQMS DOCUMENT CONTROL



SECTION A-A

CATALOG NO.	DESCRIPTION	MATERIAL	DIM "A"	DIM "B"	DIM "C"	DIM "D"	DIM "E"	DIM "F"	DIM "G"	DIM "H"
TA10816/PP	1/2" NPT X 1" PP	POLYPROPYLENE	1.075	.980	.62	1.12	.555	.375	2.48	.765
TA10816/P	1/2" NPT X 1" P	POLYETHYLENE	1.070	.980	.61	1.09	.535	.375	2.43	.745
TA10816/N	1/2" NPT X 1" N	NYLON	1.080	.990	.63	1.12	.555	.375	2.49	.770

SHOWN

REV	WRO#	DESCRIPTION
C	95.00072	CONVERTED TO 3D FORMAT

UNLESS OTHERWISE SPECIFIED:  
 DIMENSIONS ARE IN INCHES  
 TOLERANCES:  
 ANGULAR:  $\pm 0.5^\circ$   
 X.X =  $\pm 0.1$   
 X.XX =  $\pm 0.05$   
 X.XXX =  $\pm 0.015$   
 REMOVE ALL SHARP EDGES AND BURRS  
 BLEND ALL RADII TO 0.01IN  
 INTERPRET GEOMETRIC TOLERANCING PER: ANSI Y 14.5 1994  
 MATERIAL: PP, P, N  
 FINISH: NA  
 THIRD ANGLE PROJECTION:

	NAME	DATE
DRAWN	JRM	03/18/11
CHECKED	KDJ	3/18/11
ENG APPR.		XX/XX/XX
MFG APPR.		XX/XX/XX
Q.A.		XX/XX/XX

**Thogus** You think it, we can make it...  
 33490 PIN OAK, AVON LAKE, OH 44012

TITLE: **1/2" NPT X 1" BARB ADAPTER**

SIZE <b>B</b>	DWG. NO. <b>TA10816</b>	REV <b>C</b>
SCALE: 1:1	MASS:	SHEET 1 OF 1

NOTES:  
 1) POLYPROPYLENE HAS COLOR OPTIONS:  
 BLACK = TA10816/PPB  
 NATURAL = TA10816/PPN

**PROPRIETARY AND CONFIDENTIAL**  
 THE INFORMATION CONTAINED IN THIS DRAWING IS THE SOLE PROPERTY OF THOGUS PRODUCTS COMPANY. ANY REPRODUCTION IN PART OR AS A WHOLE WITHOUT THE WRITTEN PERMISSION OF THOGUS PRODUCTS COMPANY IS PROHIBITED.