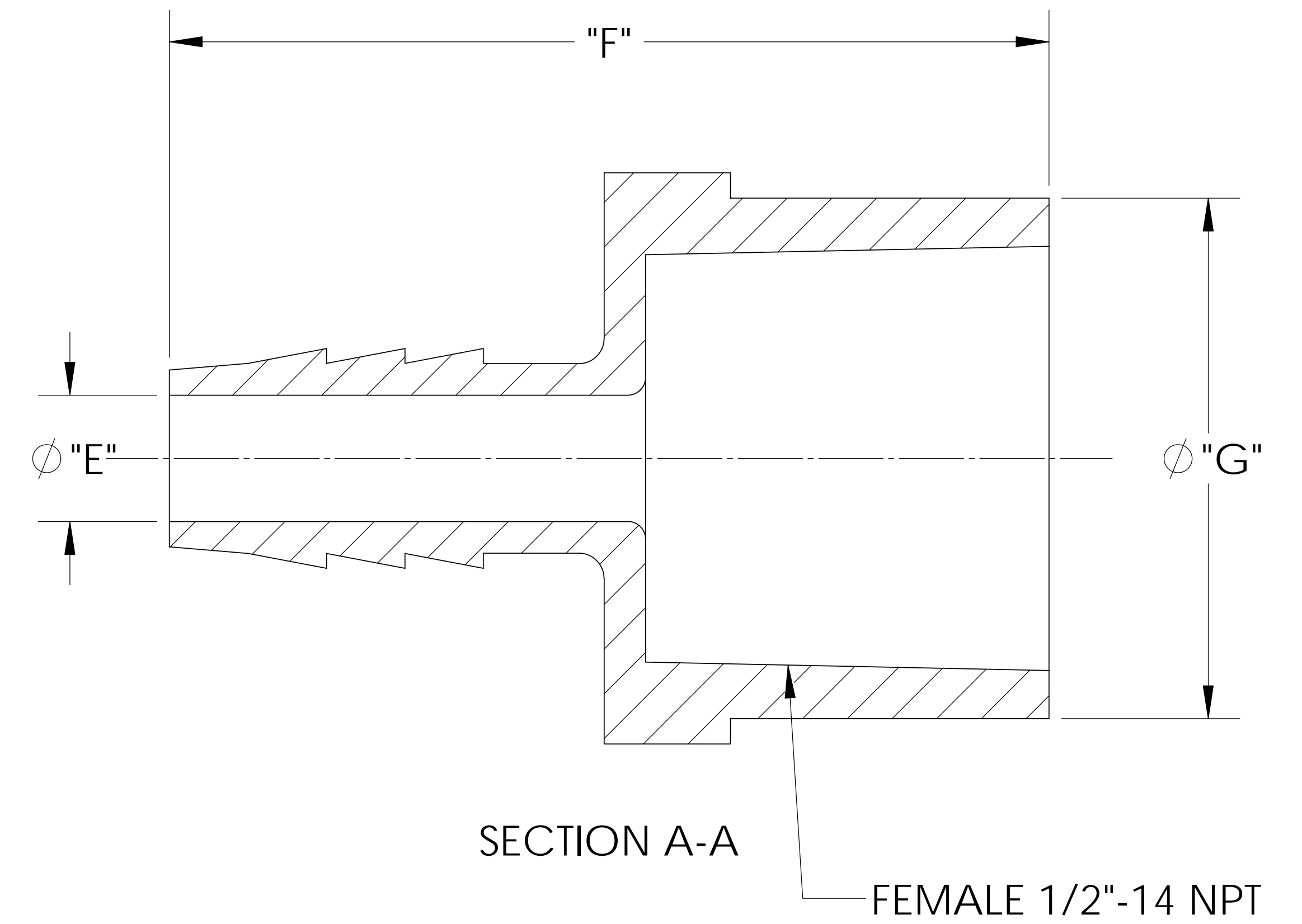
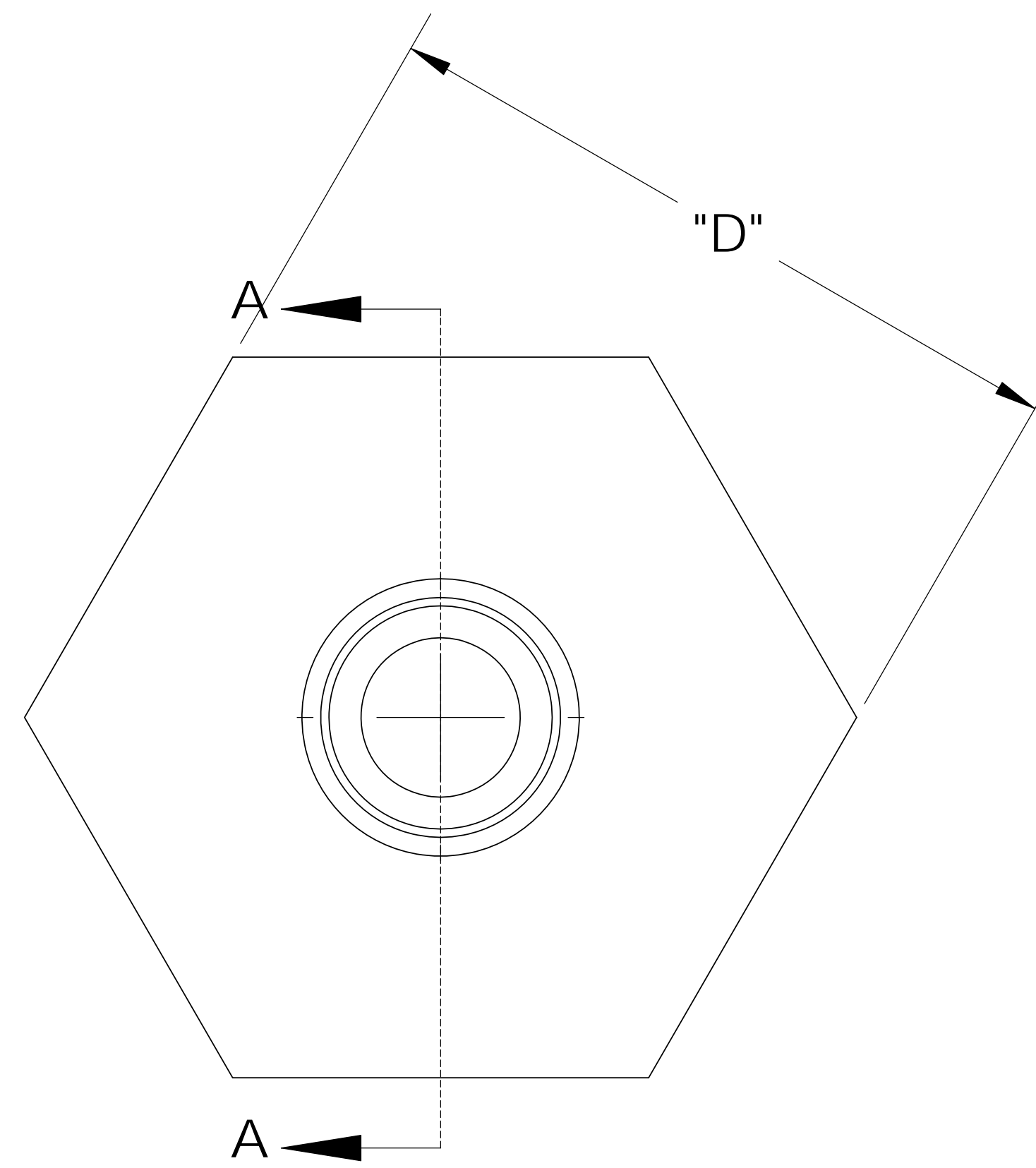
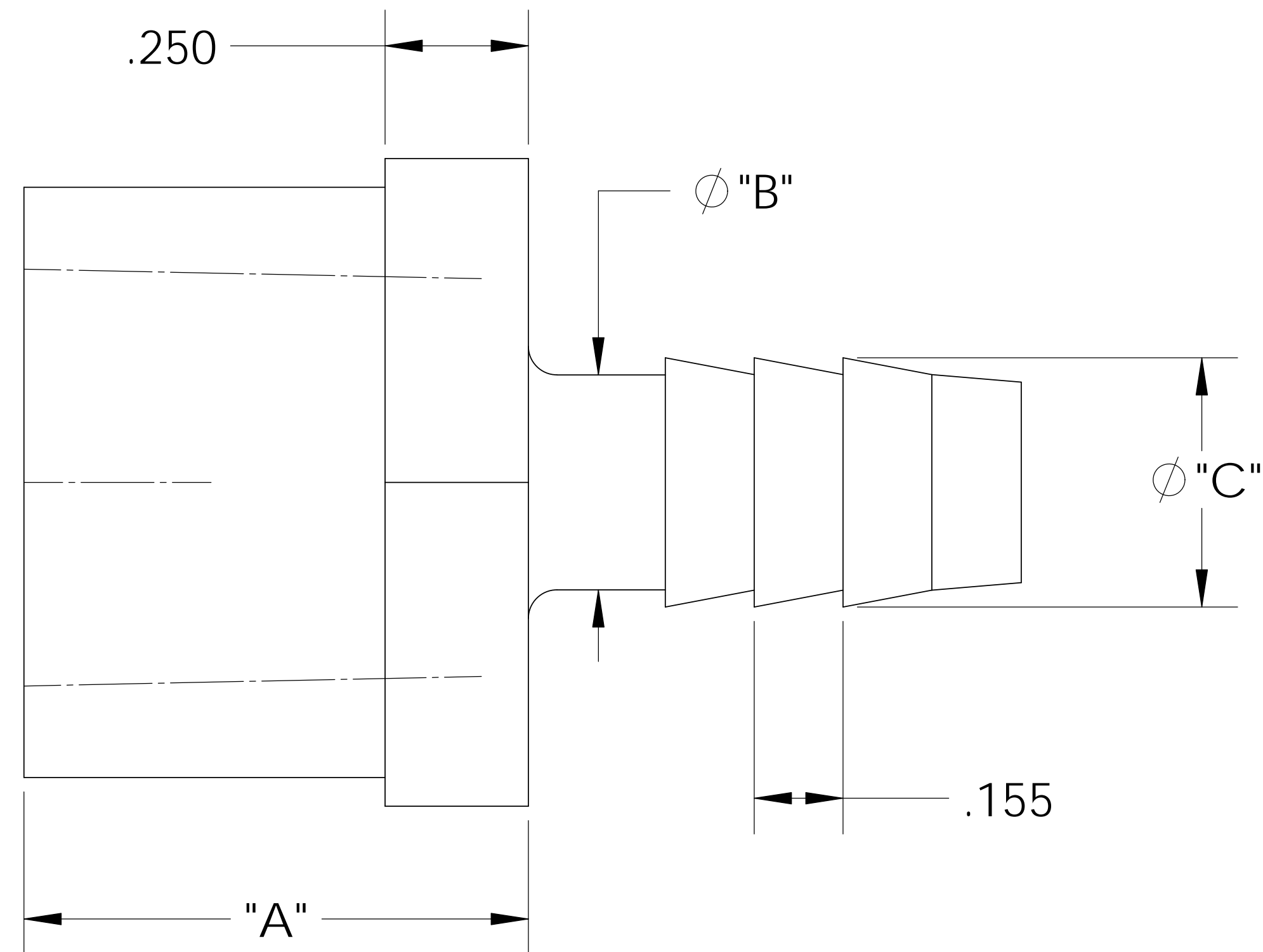
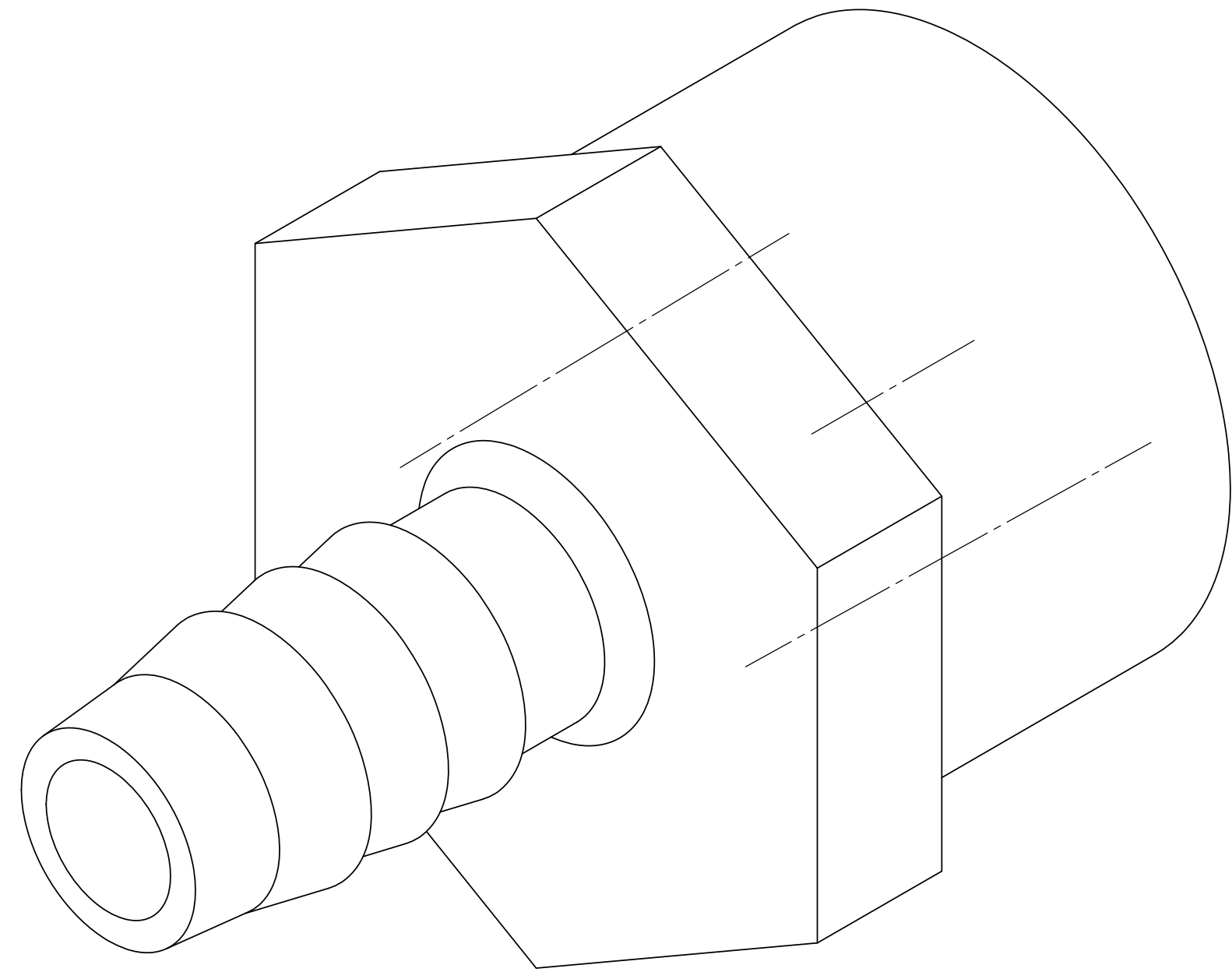


UNCONTROLLED IF PRINTED; CONTROLLED DOCUMENT LOCATED IN IQMS DOCUMENT CONTROL



CATALOG NO.	DESCRIPTION	MATERIAL	DIM "A"	DIM "B"	DIM "C"	DIM "D"	DIM "E"	DIM "F"	DIM "G"
TAF1086/PP	1/2" NPT X 3/8" PP	POLYPROPYLENE	.865	.370	.430	1.11	.245	1.73	1.020
TAF1086/N	1/2" NPT X 3/8" N	NYLON	.808	.375	.435	1.13	.250	1.74	1.030

SHOWN

REV	WRO#	DESCRIPTION
C	95.00144	CONVERTED TO 3D FORMAT

UNLESS OTHERWISE SPECIFIED:
 DIMENSIONS ARE IN INCHES
 TOLERANCES:
 ANGULAR: ±0.5°
 X.X = ± 0.1
 X.XX = ± 0.05
 X.XXX = ± 0.015
 REMOVE ALL SHARP EDGES
 AND BURRS
 BLEND ALL RADII TO 0.01IN
 INTERPRET GEOMETRIC
 TOLERANCING PER: ANSI Y 14.5 1994
 MATERIAL:
 PP, N
 FINISH:
 NA
 THIRD ANGLE PROJECTION:

NAME	DATE
DRAWN JRM	05/24/11
CHECKED KDJ	5/24/11
ENG APPR.	XX/XX/XX
MFG APPR.	XX/XX/XX
Q.A.	XX/XX/XX

Thogus You think it, we can make it.
 33490 PIN OAK, AVON LAKE, OH 44012

TITLE:
**1/2" NPT FEMALE X 3/8"
 BARB ADAPTER**

SIZE B	DWG. NO. TAF1086	REV C
------------------	----------------------------	-----------------

DO NOT SCALE DRAWING SCALE: 2:1 MASS: SHEET 1 OF 1

NOTES:
 1) POLYPROPYLENE HAS COLOR OPTIONS:
 BLACK = TAF1086/PPB
 NATURAL = TAF1086/PPN

PROPRIETARY AND CONFIDENTIAL
 THE INFORMATION CONTAINED IN THIS
 DRAWING IS THE SOLE PROPERTY OF
 THOGUS PRODUCTS COMPANY. ANY
 REPRODUCTION IN PART OR AS A WHOLE
 WITHOUT THE WRITTEN PERMISSION OF
 THOGUS PRODUCTS COMPANY IS
 PROHIBITED.